



611 S ASHLEY  
ANN ARBOR, MI

VIEW FROM NORTHWEST

12.05.2018







611 S ASHLEY  
ANN ARBOR, MI

VIEW FROM SOUTHWEST

12.05.2018







611 S ASHLEY  
ANN ARBOR, MI

VIEW FROM WEST - PROPOSED DESIGN

12.05.2018







611 S ASHLEY  
ANN ARBOR, MI

VIEW FROM WEST - PREVIOUS DESIGN

12.05.2018







611 S. ASHLEY  
PROPOSED DESIGN

611 S ASHLEY  
ANN ARBOR, MI

ASHLEY STREET ELEVATION  
1" = 30'-0"  
0 15' 30' 60'  
12.05.2018







VIEW OF BLOCK FROM NORTHWEST ON MADISON ST.



VIEW OF BLOCK FROM NORTHEAST ON MAIN ST.



VIEW ACROSS ASHLEY ST.



VIEW OF BLOCK FROM SOUTHEAST ON MAIN ST.

611 S ASHLEY  
ANN ARBOR, MI

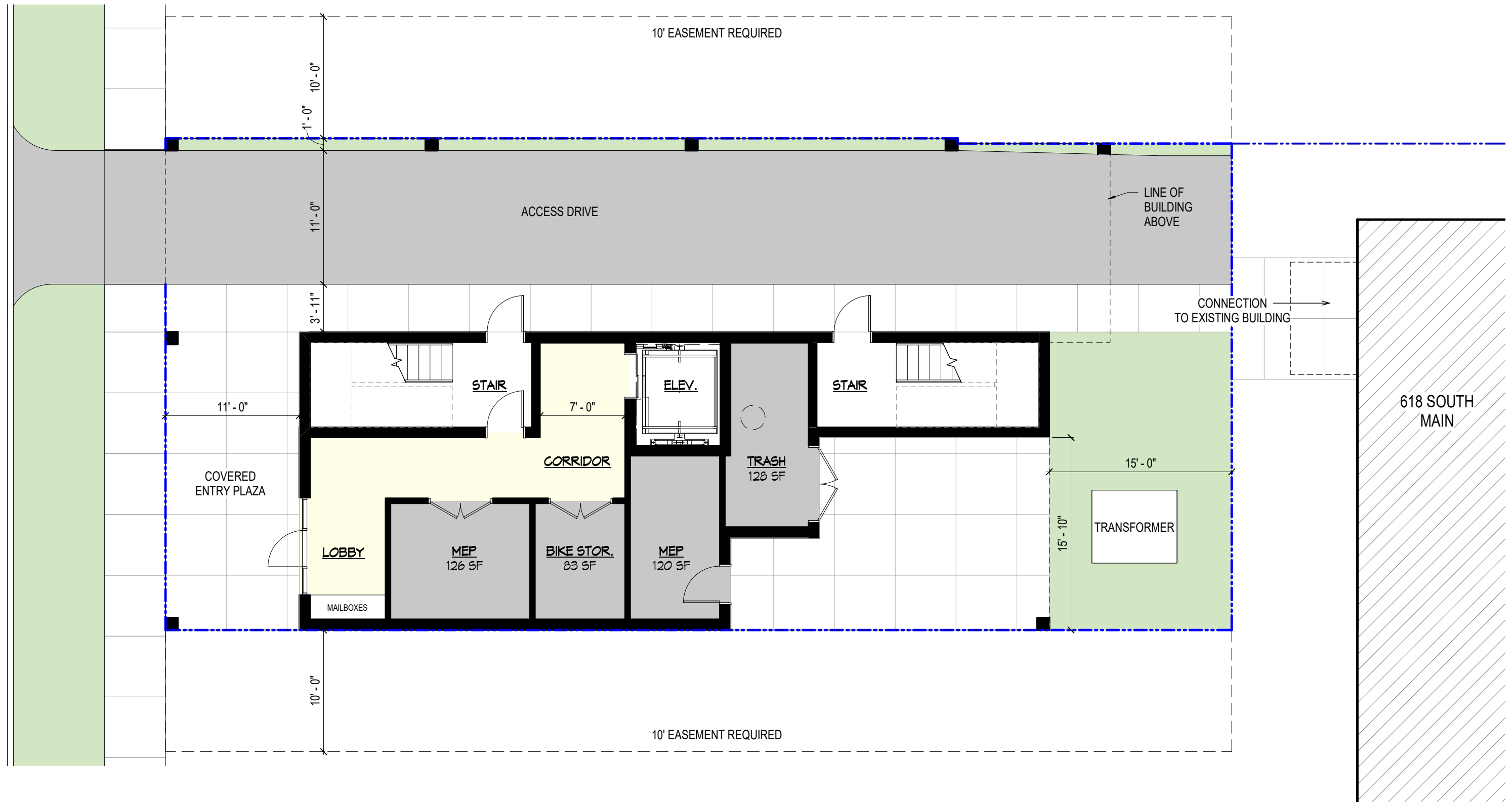
EXISTING CONTEXT IMAGES

12.05.2018

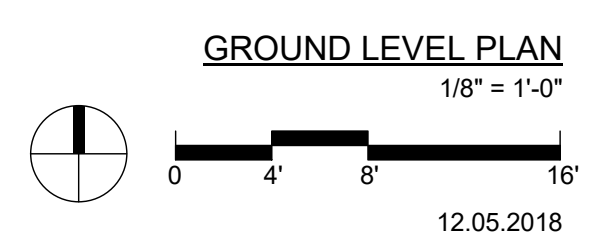




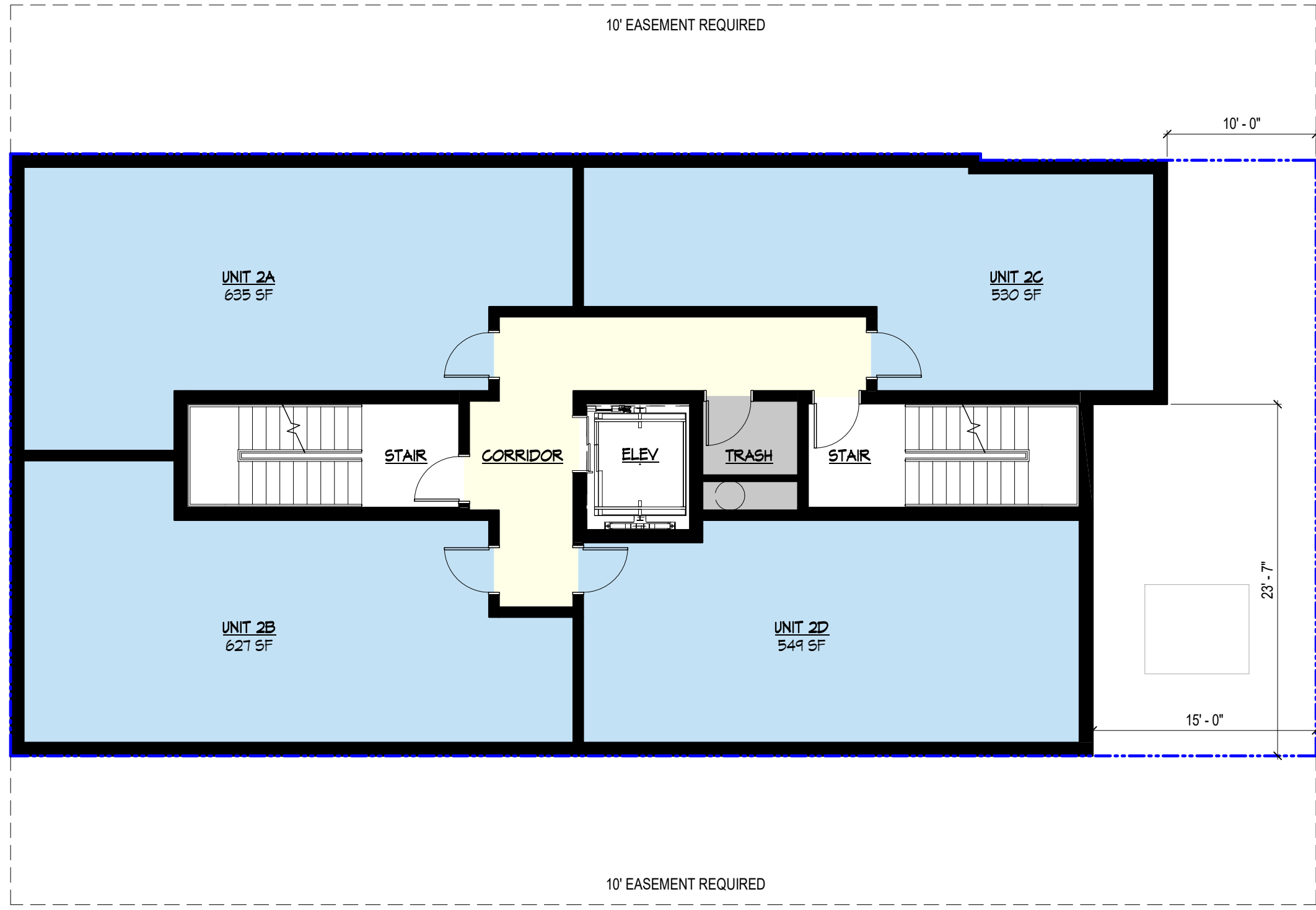
SASHLEY ST.



611 S ASHLEY  
ANN ARBOR, MI







611 S ASHLEY  
ANN ARBOR, MI

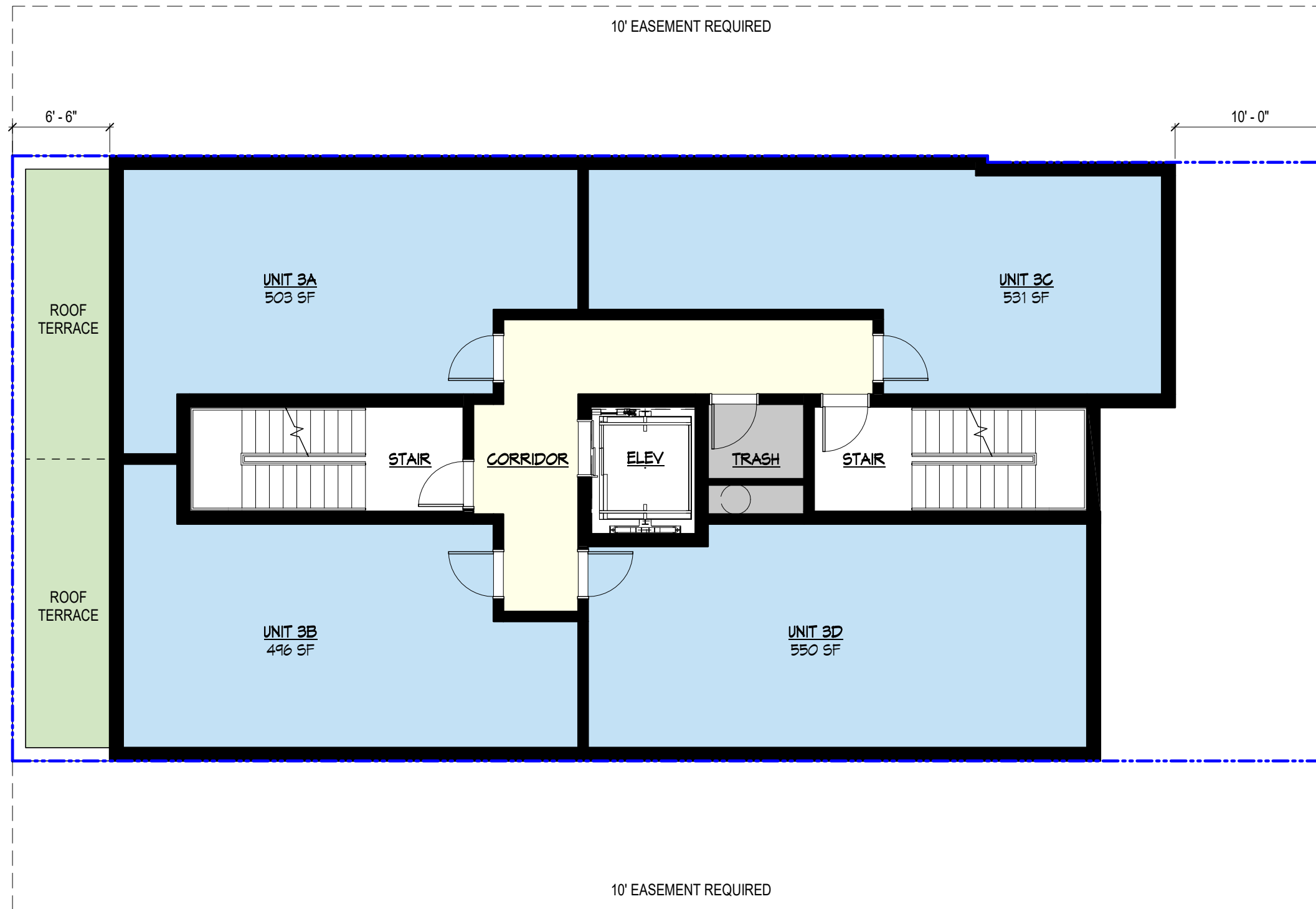
LEVEL 2 FLOOR PLAN  
1/8" = 1'-0"

0 4' 8' 16'

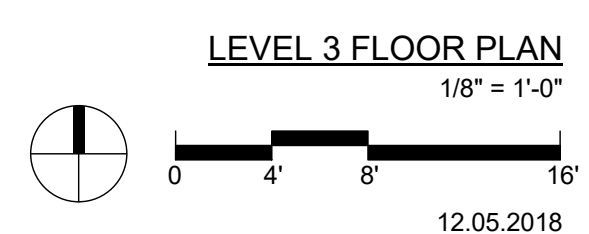
12.05.2018



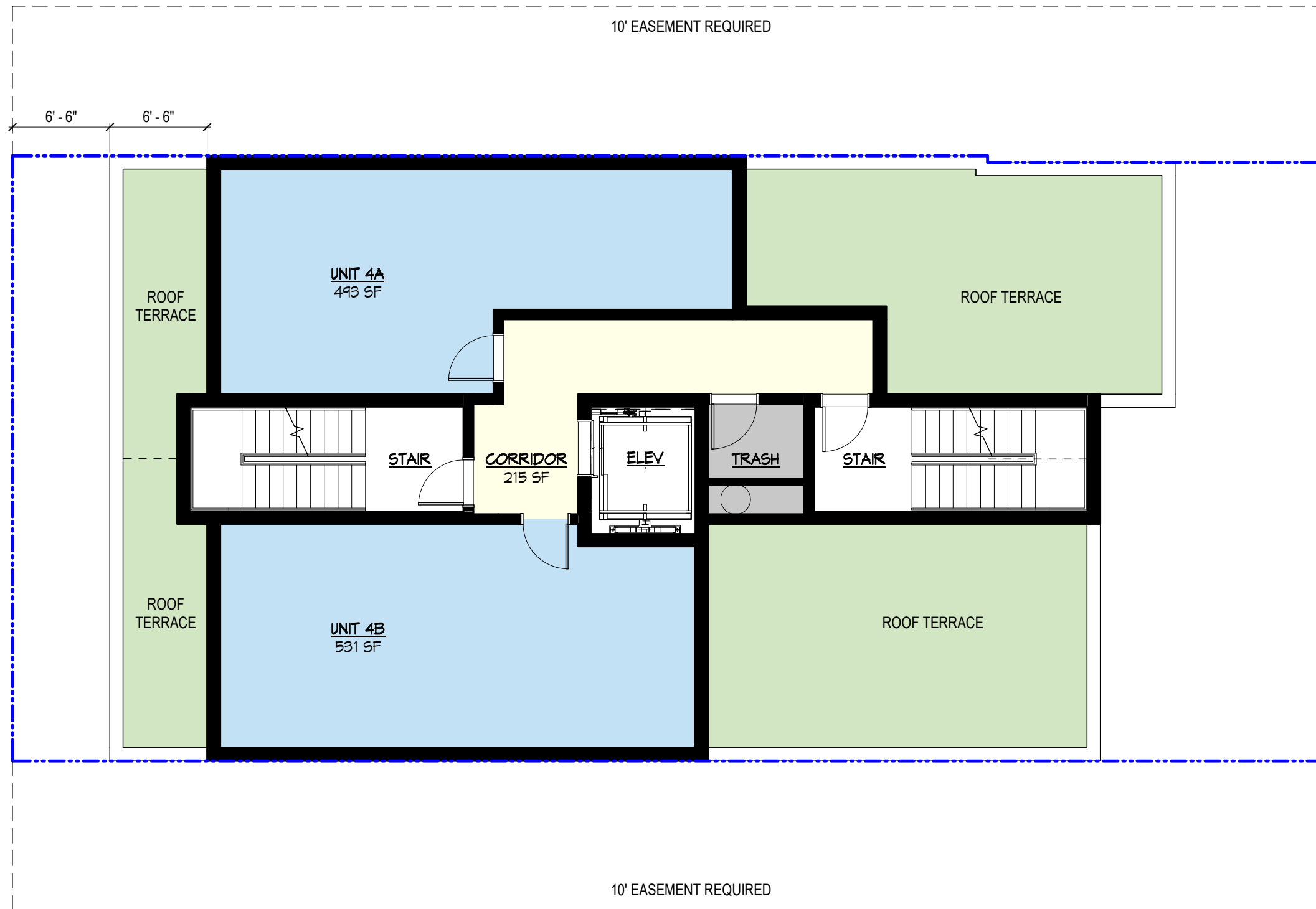




611 S ASHLEY  
ANN ARBOR, MI







611 S ASHLEY  
ANN ARBOR, MI

LEVEL 4 FLOOR PLAN  
1/8" = 1'-0"

0 4' 8' 16'

12.05.2018

