



MEMORANDUM

TO: Mayor and City Council
FROM: Tom Crawford, Interim City Administrator
DATE: October 5, 2020
SUBJECT: Response to Council Resolution R-20-225 – Resolution Directing Evaluation of City Pedestrian and Cycling Transportation Environment by a Professional Engineer with Vision Zero Expertise

This memorandum and attached report are provided in response to approved City Council [Resolution R-20-225](#) – Resolution Directing Evaluation of City Pedestrian and Cycling Transportation Environment by a Professional Engineer with Vision Zero Expertise. Specifically, City Council directed the City Administrator to engage with Sam Schwartz, a PE with Vision Zero expertise, to review a sample of the city’s pedestrian crossings, including, but not limited to various facility components utilized across varied geographic installations, related to city ordinances and educational communications, and interdependencies, such as, unlit crosswalks and the crosswalk ordinance. The purpose of the evaluation is to identify deficiencies and opportunities to significantly decrease our pedestrian and cyclist crash rate.

Attached to this memo is the draft report produced by the Sam Schwartz consulting team. Staff is currently reviewing the report and its findings, but wanted to share it with City Council as soon as possible. Any comments, questions, or concerns about the report can be shared with staff.

Attachments: Pedestrian & Bicycle Infrastructure Review

cc: J Fournier
R Hess
S Higgins
C Hupy
N Hutchinson
E Cooper

Memorandum

To: Eli Cooper, AICP – City of Ann Arbor
From: Sam Schwartz Consulting
Date: October 1, 2020
Re: Pedestrian & Bicycle Infrastructure Review

Ann Arbor's crosswalk ordinance mandates drivers to stop for pedestrians standing at the curb or within a crosswalk. Even so, tragically 44 percent of all crashes where a person walking was killed or seriously injured from 2014-2018 were a result of the driver failing to yield. In 2017, the crosswalk ordinance was reviewed in a memorandum by Toole Design Group, finding the ordinance to be "within the range of regional variation in norms and practices and consistent with driver instruction in Michigan."

In 2019, the city published Crosswalk Design Guidelines outlining design options for different types of crossing locations and establishing a transparent process to choose the level of design for a crosswalk. Overall, the guidelines provide an organized and clear approach for determining a crossing's design features and gives careful consideration for school crossings. Our review indicates that the guidelines present a thorough set of crosswalk treatments; however, opportunities exists to update the guidance as new research and device approvals have emerged.

To identify the design options for a selected crosswalk location, the guidelines follow a decision tree to determine whether the location requires (1) standard, (2) standard+, or (3) high-risk design applications. The various treatments are organized into separate matrices for controlled and uncontrolled design options. Uncontrolled design options, which is the focus of this review, follow a fairly intricate selection process. In addition to vehicular volume, the process is informed by the National Cooperative Highway Research Program (NCHRP) Report 562 five-step worksheet. The worksheet considers various data inputs including pedestrian volume, crossing distance, walking speed, vehicle speed, etc. to estimate pedestrian delay and to determine if a signal warrant is met. Ultimately, the pedestrian delay and expected compliance guides the design designation.

While the NCHRP Report considers school locations, the five-step worksheet does not apply to school crossings. The guidelines give special consideration for crosswalks adjacent to a school or designated walking route and qualifies the design option to apply the next level (e.g. a standard+ crosswalk would become high-risk).

Sam Schwartz compared Ann Arbor's existing Crosswalk Design Guidelines to relevant standards and guidance in the National Association of City Transportation Officials (NACTO) *Urban Street Design Guide* and the *Michigan Manual of Uniform Traffic Control Devices (MMUTCD) 2011*. It is evident these standards and guidance were all consulted in the creation of the recent Crosswalk Design Guidelines. Organized by controlled and uncontrolled crossings, NACTO guidance applies treatments given vehicle volume, vehicle speed, and street width with special considerations for schools, parks, senior centers, transit stops, hospitals, campuses, and major public buildings. While similar to NACTO's toolbox of treatments, Ann Arbor's design categories are more straightforward in prioritizing safety.

Sam Schwartz also compared the existing Crosswalk Design Guidelines to the Federal Highway Administration (FHWA) *Guide for Improving Pedestrian Safety at Uncontrolled Crossing Locations* which post-dates the original authoring of the design guidelines. In FHWA guidance, crosswalk treatments are determined by roadway characteristics (vehicle volume, posted speed limit, and lane configuration) and, separately, by safety issues. Crash history and typical dangerous driving behaviors help inform safety measures. FHWA provides additional guidance about the effectiveness of Pedestrian Hybrid Beacons and Rectangular Rapid Flashing Beacons along with the interaction with other crosswalk treatments. The FHWA guidance links tools to the MUTCD standards, describing considerations such as minimum widths or thresholds. Overall, the Crosswalk Design Guidelines fall within FHWA guidance and, like FHWA, Ann Arbor's guidance identifies signage with their MUTCD designation.

Reviewed Standards and Guidance:

- 2019 - [Ann Arbor Crosswalk Design Guidelines](#)
- 2013 - [National Association of City Transportation Officials \(NACTO\) Urban Street Design Guide](#)
- 2006 - [National Cooperative Highway Research Program \(NCHRP\) Report 562](#)
- 2018 - [Federal Highway Administration \(FHWA\) Guide for Improving Pedestrian Safety at Uncontrolled Crossing Locations](#)
- 2011 - [Manual of Uniform Traffic Control Devices \(MUTCD\), 2011 Michigan MUTCD, 2009 Federal Edition](#)
- 2016 - [Michigan Department of Transportation \(MDOT\) User guide for R1-6 Gateway Treatment for Pedestrian Crossings](#)
- 2020 - [MDOT Guidance for Installation of Pedestrian Crosswalks on Michigan State Trunkline Highways](#)
- 2005 - [FHWA Safety Effects of Marked Versus Unmarked Crosswalks at Uncontrolled Locations](#)
- 2004 (2010 Update) - [American Association of State Highway Transportation Officials \(AASHTO\) Guide for the Planning, Design, and Operations of Pedestrian Facilities](#)

Data Collection

Based on a guideline review and using responses from the city's Pedestrian Crossing Survey from the beginning of 2020, Sam Schwartz identified an initial list of uncontrolled crosswalk locations for data collection. Those locations were reviewed and expanded upon by councilmembers. In a meeting with councilmembers, additional crosswalk locations were recommended for field review. Ultimately, a list of 23 crosswalk locations were identified for review, none controlled by a stop sign or signal. The selected crosswalks are shown in Figure 1 and included a variety of midblock crossings, school crossings, and/or along bike routes that make up a geographically diverse and representative sample of the existing pedestrian and bicycle network throughout the city. Additionally, the selected crosswalks are located on a variety of street types including local, collector, minor and principal arterials.

Table 1. Crosswalk Locations for Field Data Collection

#	Crosswalk Location	Type	Bus Stop	Bike Facility	School
1	Pontiac Trail south of Arrowwood Trail	Uncontrolled		<input checked="" type="checkbox"/>	
2	Pontiac Trail & Brookside Drive	Uncontrolled		<input checked="" type="checkbox"/>	
3	Traver Road south of John A Woods Avenue	Uncontrolled			
4	Broadway Street/ Division Street west of Broadway Bridge	Uncontrolled			
5	Fifth Avenue along Community High School	Uncontrolled			<input checked="" type="checkbox"/>
6	Nixon Road north of Plymouth Road	Uncontrolled	<input checked="" type="checkbox"/>	<input checked="" type="checkbox"/>	
7	Green Road & Burbank Drive (north of Plymouth)	Uncontrolled	<input checked="" type="checkbox"/>		
8	Green Road & Hubbard Road	Uncontrolled		<input checked="" type="checkbox"/>	
9	Geddes Road & Earhart Road	Roundabout			
10	Geddes Ave near Gallup Park pathway	Uncontrolled		<input checked="" type="checkbox"/>	
11	Geddes Avenue & Arlington Boulevard	Uncontrolled			
12	Washtenaw Avenue north of Stadium Boulevard	Uncontrolled			
13	Pittsfield Boulevard & Jeanne Avenue	Roundabout			
14	Fernwood Avenue & Lorraine Street	Uncontrolled			<input checked="" type="checkbox"/>
15	Tappan Avenue & Oakland Avenue	Uncontrolled	<input checked="" type="checkbox"/>		<input checked="" type="checkbox"/>
16	Stadium Boulevard between Kipke Drive & Main Street	Uncontrolled		<input checked="" type="checkbox"/>	
17	Delaware Drive between Mershon Drive & 7th Street	Uncontrolled			
18	Victors Way & Boardwalk Drive	Uncontrolled		<input checked="" type="checkbox"/>	
19	State Street and Ellsworth Road	Roundabout			
20	Jefferson Street & Third Street	Uncontrolled			
21	Soule Boulevard & Lutz Avenue	Uncontrolled			
22	Maple Road & Haisley Drive	Uncontrolled	<input checked="" type="checkbox"/>	<input checked="" type="checkbox"/>	
23	Vesper Road & Red Oak Road	Uncontrolled			

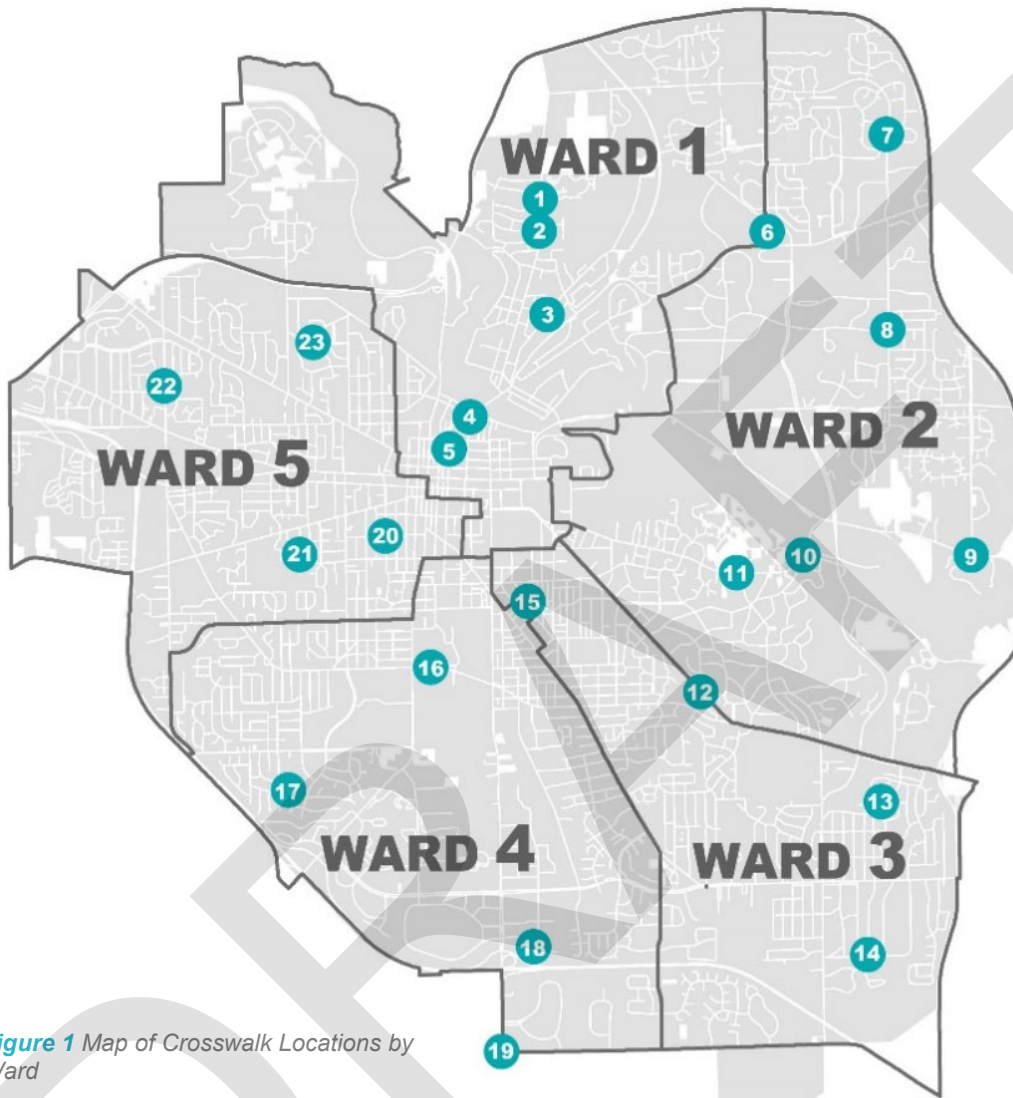


Figure 1 Map of Crosswalk Locations by Ward

Key Findings

On September 17, 2020, a Sam Schwartz staff member visited each of the 23 identified crosswalk locations to collect information using the data collection forms contained in the Appendix A and took photographs. All field observations were conducted during daylight hours.

Of the 23 crosswalk locations, 20 were uncontrolled and three were at roundabouts (a single approach was observed at each roundabout). Nine crosswalk locations were adjacent to bus stops. Five locations were adjacent to schools with an additional five locations within two blocks of a school. Twelve crosswalks intersected a bike facility. Table 2 summarizes the crosswalk devices inventoried in the field by street type.

Table 2. Summary of Crosswalk Devices by Street Type

Street Type	#	High Visibility Markings	Adv. Ped Warning Series	Adv. School Warning Series	Ped Warning Series	School Warning Series	Bright Sides	In Lane Signs	Stop Bar	Stop Here for Ped	Over-head	RRFB	Ped Refuge Island	Curb Ext.
Local (2 lanes)	8	6*	0	3	0	3	0	0	0	0	0	0	1	0
Collector (2-3 lanes)	4	2*	1	0	2	0	2	1	0	0	0	2	0	0
Minor/ Major 2 Lanes	6	6	2	0	2	0	1	3	0	1	1	1	2	2
Minor/ Major ≥3 Lanes	5	5	1	0	3	0	1	2	2	3	0	3	2	0
Total	23	18	4	3	7	3	4	6	2	4	1	6	5	2

*One crosswalk is under construction

Based on the information collected in the field, several key findings were identified and summarized below.

1. Crosswalk pavement markings are consistent and in good condition.

The majority (87%) of the crosswalks were marked. One crosswalk was unmarked (Vesper Road & Red Oak Road) and two were part of a resurfacing or restriping project during the Sam Schwartz field visit. Of the marked crosswalks, 95% had high-visibility pavement markings, and nearly all displayed the continental design, as shown in [Figure 2](#). One crosswalk had parallel striping (Pittsfield Boulevard & Jeanne Avenue). Overall, the pavement markings were in good condition. Only one location had faded pavement markings (Broadway Street/ Division Street west of Broadway Bridge).



Figure 2 This crosswalk at Green Road and Burbank Road applies high-visibility continental pavement markings.

2. Basic crosswalk signage meets minimum engineering standards. In some locations, the minimum standards are exceeded with optional applications used.

Over half of the observed crosswalks (61%) included signage designated in the Guidelines. All crosswalks without signage were located on low-speed (25 MPH) local, collector, or minor arterial streets, or on a street under construction. 56% of the unsigned crosswalks were on local streets, and 22% on minor arterials and 22% on collector streets. The unsigned crosswalks aligned with “Standard” design option in the Guidelines.

Pedestrian Warning Series (W11-2) and In-Lane Signs (R1-6a) were the most common signage application. It was noted in the field that the in-lane signs at both the centerline and lane lanes appeared to be particularly effective at calming traffic by creating a sense of narrow travel lanes, encouraging drivers to slow down. There was some inconsistency in the application of in-lane signs and observations show the location, placement, and number of signs varied by location (see [Figures 3 and 4](#)).



Figure 3 The crosswalk at Pontiac Trail south of Arrowwood Trail has four in-lane pedestrian signs.



Figure 4 The crosswalk at Broadway and Division includes one in-lane pedestrian sign in the street and one on the island to the left.

Of the crosswalks with signs, 50% included advanced pedestrian or school warning signs. Four of the seven pedestrian warning series signs included advanced warning signs. School warning series (S1-1) signs were present at two of the five observed crosswalks adjacent to schools and one of the five observed crosswalks within two blocks of a school. All the observed school warning series signs had advanced warning signs. As advanced warning signs are considered optional by MUTCD, the city's application meets standards. However, FHWA best practice guidance recommends the use of advance signage in conjunction with warning signs, particularly at locations where drivers may not be expecting a crosswalk.

Of the observed crosswalks, the Stop Here for Pedestrians sign was applied four times, and only once in conjunction with a stop bar. These crosswalks without a stop bar are inconsistent with the city's Guidelines which call for a Stop Here for Pedestrian (R1-5b) sign to be used with a stop bar. Additionally, there appear to be several other crossings where this signage would be beneficial given FHWA's strongly worded guidance for crossings on roads with four or more lanes and/or roads with speed limits of 35 mph or greater.



Figure 5 A temporary, non-MUTCD sign at Vesper Road and Red Oak Road. This suggests a desire for appropriate MUTCD signage at some uncontrolled crossing locations.



Figure 6 A yellow school warning series sign at Delaware Drive between Mershon Drive and 7th Street. While the yellow color is permitted on MUTCD signage, school warning signs shall have a fluorescent yellow-green background.

3. Several locations would benefit from additional or more consistent best practice countermeasure treatments, particularly for multi-lane roadways.

About a quarter of the observed crosswalk locations (26%) have a RRFB, including one school location (Tappan Middle School). The RRFBs were located on collector, minor arterials, and major arterial streets with varying speed limits. In the Crosswalk Design Guidelines, RRFBs are not listed as a recommendation for collector street types and may be an appropriate addition to the street type's design options.

Of the six locations with RRFBs, only one location had a pedestrian refuge island. While pedestrian refuge islands are a desirable crosswalk tool, RRFBs can serve as useful devices on four lane roads without islands where the posted speed limit is 30 MPH or less and average daily traffic (ADT) volume is 9,000 vehicles per day or less. Based on FHWA guidance, however, there are a few locations where an RRFB may not be sufficient. This includes streets with a posted speed limit of 40 MPH or more and ADTs exceeding 15,000 vehicles per day. An example may include the crosswalk on Washtenaw Avenue near Tappan Middle School where the speed limit is 45 MPH with a 30 MPH school zone during specific times (see [Figure 7](#)). In cases such as this, the FHWA recommends the use of a Pedestrian Hybrid Beacon, along with other crosswalk devices (e.g. Stop Here For Pedestrians sign and corresponding stop bar).

In the Guidelines, Pedestrian Hybrid Beacons (PHB) and RRFBs are recommended in “high-risk” locations on minor and major arterials. There were no observed PHBs during the field observations. During field observations, it appeared the prevailing speed of traffic was higher than the speed limit at some of the locations with RRFBs, particularly at locations with a speed limit of 35 MPH and over – although, official speed data was not collected. PHBs may be more appropriate at higher speed/volume locations to better alert traffic to stop.

Rather than categorizing by functional classification—which only serves as a proxy for key characteristics of the crossing, the FHWA provide guidance on crosswalk devices based on speed limit, lane count, and traffic volume. For example, RRFBs and PHBs are considered at all uncontrolled crosswalk locations except two lane roads ≤ 30 mph and $< 15,000$ ADT or three lane roads with a raised median, ≤ 30 MPH, and $< 9,000$ ADT. It would be beneficial to organize the suite of crosswalk devices based on speed and traffic volume rather than functional classification.



Figure 7 Near Tappan Middle School, crosswalk, with an RRFB, crosses four lanes of traffic with a 45 MPH speed limit with a 30 MPH school zone from 7:30 – 8:20 AM and 3:05 – 3:35 PM

4. Approximately one-third of the crosswalks had no adjacent lighting.

The presence/proximity of lighting was assessed during the daytime crosswalk observations. Per FHWA guidance, lighting within ten feet of the crosswalk markings is considered 'at the crosswalk'. Lighting between 10 to 20 feet is identified as 'adjacent to the crosswalk'. Crosswalks with lighting more than 20 feet away were considered to have no adjacent lighting. Nearly three-quarters of the crosswalks had lighting at or adjacent to the sidewalk; 52% of the lit crosswalks had lighting at the crosswalk and 48% had adjacent lighting. About a quarter of the crosswalks had no adjacent lighting. Of the crosswalks with no adjacent lighting, most were on local streets with lower traffic volumes. The midblock crosswalk at Pontiac Trail south of Arrowwood Trail, a minor arterial, was the only observed non-local street to have no adjacent lighting.

Table 3.

Location of Lighting	#	%
At Crosswalk (<10 feet)	9	39%
Adjacent Lighting (10-20 feet)	8	35%
No Adjacent Lighting (>20 feet)	6	26%

The guidelines note street lighting is considered by Street Light Asset Management Team (SLAM). The guidelines acknowledge that collector, minor, and major arterial streets will contain positive contrast lighting, further guidance for street lighting at crosswalks is contained in Ann Arbor's engineering standards ([Orange Book](#)) and is currently being updated. NACTO and FHWA provide specific guidance for street lighting at crosswalks which the updated standards will reference. For example, FHWA recommends lighting to be placed within 10 to 15 feet in front of mid-block crosswalks in each direction of travel.



Figure 8 The light at Pontiac Trail south of Arrowwood Trail sits 60 feet away from the crosswalk.



Figure 9 The crosswalk on Geddes Avenue at Gallup Path includes lighting at the crosswalk on both sides.

Recommendations

- The FHWA publication provides an opportunity for Ann Arbor to update its guidance and enhance best practice applications. To codify what was observed in practice in many cases, the following recommendations were identified to inform the potential revision of, or inclusion in, the city's Crosswalk and Design Guidelines and/or related engineering design standards (such as Ann Arbor's Orange Book).
 - While Ann Arbor's Guidelines consider traffic volume and vehicular speed in the design process, updates should consider adopting FHWA methodology of organizing the suite of crosswalk devices based on roadway characteristics (speed, traffic volume, lane configuration) rather than functional classification.
 - In addition to school designations, special considerations should be expanded to include bus stops, parks, community centers, senior facilities, side paths/ trail crossings, and areas with higher transportation equity needs as candidates for "standard+" and/or "high risk" locations.
 - Set the minimum standard for high-visibility continental pavement markings.
 - Updates should reference specific guidance from NACTO and FHWA for lighting to be placed within 10 to 15 feet in front of mid-block crosswalks in each direction of travels.
 - Guidelines for Pedestrian Hybrid Beacons and Rectangular Rapid Flashing Beacons should be updated to reflect current FHWA guidance.
- Follow consistency in the application of lighting, selected signage and countermeasure device treatments.
 - Consistent application of in-lane pedestrian signs and advanced pedestrian warning signage.
 - Use Stop Here for Pedestrians signs in conjunction with stop bars.
 - Continue to coordinate with the SLAM team to review lighting placement at uncontrolled crossings
- Ann Arbor should continue to educate drivers on the local crosswalk ordinance and support the institutionalization of stopping for pedestrians at a crosswalk. The city should continue and expand the A2 Be Safe Campaign, ensuring the campaign is shared with other agencies to reinforce consistent messaging and amplify the A2 Be Safe efforts.

Appendix

- A. FHWA Crosswalk Application Guidance Chart
- B. Blank Data Collection Form
- C. Select Crosswalk Devices by Street Type
- D. Completed Field Observation Forms (PDF)
- E. Completed Field Observations Data (Excel)

Appendix A | FHWA Crosswalk Application Guidance Chart

Table 1. Application of pedestrian crash countermeasures by roadway feature.

Roadway Configuration	Posted Speed Limit and AADT								
	Vehicle AADT <9,000			Vehicle AADT 9,000–15,000			Vehicle AADT >15,000		
	≤30 mph	35 mph	≥40 mph	≤30 mph	35 mph	≥40 mph	≤30 mph	35 mph	≥40 mph
2 lanes (1 lane in each direction)	① 2	①	①	①	①	①	①	①	①
	4 5 6	5 6	5 6	4 5 6	5 6	5 6	4 5 6	5 6	5 6
3 lanes with raised median (1 lane in each direction)	① 2 3	① ③	① ③	① 3	① ③	① ③	① ③	① ③	① ③
	4 5	5	5	4 5	5	5	4 5	5	5
3 lanes w/o raised median (1 lane in each direction with a two-way left-turn lane)	① 2 3	① ③	① ③	① 3	① ③	① ③	① ③	① ③	① ③
	4 5 6	5 6	5 6	4 5 6	5 6	5 6	4 5 6	5 6	5 6
4+ lanes with raised median (2 or more lanes in each direction)	① ③	① ③	① ③	① ③	① ③	① ③	① ③	① ③	① ③
	5	5	5	5	5	5	5	5	5
4+ lanes w/o raised median (2 or more lanes in each direction)	① ③	① ③	① ③	① ③	① ③	① ③	① ③	① ③	① ③
	5 6	5 6	5 6	5 6	5 6	5 6	5 6	5 6	5 6
<p>Given the set of conditions in a cell,</p> <p># Signifies that the countermeasure is a candidate treatment at a marked uncontrolled crossing location.</p> <p>● Signifies that the countermeasure should always be considered, but not mandated or required, based upon engineering judgment at a marked uncontrolled crossing location.</p> <p>○ Signifies that crosswalk visibility enhancements should always occur in conjunction with other identified countermeasures.*</p> <p>The absence of a number signifies that the countermeasure is generally not an appropriate treatment, but exceptions may be considered following engineering judgment.</p>									
<p>1 High-visibility crosswalk markings, parking restrictions on crosswalk approach, adequate nighttime lighting levels, and crossing warning signs</p> <p>2 Raised crosswalk</p> <p>3 Advance Yield Here To (Stop Here For) Pedestrians sign and yield (stop) line</p> <p>4 In-Street Pedestrian Crossing sign</p> <p>5 Curb extension</p> <p>6 Pedestrian refuge island</p> <p>7 Rectangular Rapid-Flashing Beacon (RRFB)**</p> <p>8 Road Diet</p> <p>9 Pedestrian Hybrid Beacon (PHB)**</p>									

Source: FHWA. (2018, July). *Guide for Improving Pedestrian Safety at Uncontrolled Crossing Locations*.

https://safety.fhwa.dot.gov/ped_bike/step/docs/STEP_Guide_for_Improving_Ped_Safety_at_Unsig_Loc_3-2018_07_17-508compliant.pdf

Data Collection Form

Please complete the following information about the crossing location.

Location:

I. Crossing Information

1. Collect aerial of crosswalk using NearMap or GoogleMaps.

2. Crossing Type:

- | | |
|---|---|
| <input checked="" type="radio"/> Controlled | <input checked="" type="radio"/> Uncontrolled |
| <input type="radio"/> Signal | <input type="radio"/> Midblock |
| <input type="radio"/> Stop Sign | <input type="radio"/> At or adjacent to an intersection |
| <input type="radio"/> Roundabout | |

3. Posted Speed Limit: *In what relation to the speed limit people seem to be driving?*

- Faster
 Slower
 About the same
 Not sure

4. Is a bus stop adjacent to the crosswalk?

- Yes No
- Sign Post
 Bench
 Shelter

5. Is a school adjacent to the crosswalk?

- Yes No

6. Does a bike facility intersect the crosswalk?

- Yes No

Type?

7. Lane Configuration:

A. Number of Lanes

B. On street parking?

- Yes No

Location?

- Curbside Loading Floating

C. Parking Clearance from X-walk:

D. Is there a porkchop island?

- Yes No

E. Is there a raised median or pedestrian refuge island?

- Yes No

F. Please describe the cross-section. (Lanes, median, etc.)

Location:

Time:

Date:

Weather:

II. Field Data Observations

1. Pavement Markings

- Unmarked crosswalk
- Marked Crosswalk
 - Faded
 - Parallel (or traditional)
 - High-visibility (continental, ladder, or zebra)

Is there a stop bar present at the crossing indicating a location for cars to stop? What is the location relative to the crosswalk?

2. Signage & Signals

Advanced Signage (within 200 ft)

- Warning Series Signage
 - Pedestrian warning series
 - School warning series

At Crosswalk

- Warning Series Signage
 - Pedestrian warning series
 - School warning series
- Bright sides or post reflectors
- In Street Stop for Pedestrian Sign

Number of Signs and Location:

- Signs on island
- Stop here for pedestrian
- Overhead mounted "local law, stop for ped"
- Signals? Associated Push-Button?
 - Pedestrian Hybrid Beacon
 - Rectangular Rapid Flashing Beacon
- Other signage:

3. Infrastructure

- Pedestrian Refuge Island
- Curb extension or bumpout
- Roadside placemaking
- Driveway present
- ADA ramp/ detectable warning
- Sidewalk connection
- Additional traffic calming features

4. Lighting

- At crosswalk (w/in 10 ft)
- Adjacent to crosswalk (10-20 ft)
- No adjacent lighting

Is lighting human-scaled?

- Yes
- No

Draw placement and measure distance from crosswalk.

5. Photos

- Crosswalk
- Signage
- Lighting
- Pavement Markings

III. Field Data Additional Notes

*When approaching or leaving the site, take note of the crosswalk as you drive through.
Are there visibility concerns?*

Notes:

DRAFT

Appendix C | Select Crosswalk Devices by Street Type

Local Streets															
Location	Crosswalk Type	Pavement Markings	Type of Markings	Adv. Ped Warning Series	Adv. School Warning Series	Ped Warning Series	School Warning Series	Bright Sides	In Lane Signs	Stop Bar	Stop Here for Ped	Over-head	RRFB	Ped Refuge Island	Curb Ext.
Traver Rd South of John A Woods	Uncontrolled	Marked	High Visibility												
Tappan Ave and Oakland Ave	Uncontrolled	Marked	High Visibility												
Fernwood Ave and Lorraine St	Uncontrolled	Marked	High Visibility		1		1								
Delaware between Mershon and 24th	Uncontrolled	Marked	High Visibility		1		1								
Vesper and Red Oak	Uncontrolled	Unmarked												1	
Jefferson and 3rd	Uncontrolled	Marked	High Visibility												
Soule and Lutz	Uncontrolled	Marked	High Visibility		1		1								
Victors Way and Boardwalk Drive	Uncontrolled	Under Construction	Under Construction												
Total			6	0	3	0	3	0	0	0	0	0	0	1	0

Collector Streets															
Location	Crosswalk Type	Pavement Markings	Type of Markings	Adv. Ped Warning Series	Adv. School Warning Series	Ped Warning Series	School Warning Series	Bright Sides	In Lane Signs	Stop Bar	Stop Here for Ped	Over-head	RRFB	Ped. Refuge Island	Curb Ext.
Green and Hubbard	Uncontrolled	Under Construction	Under Construction												
Green and Burbank	Uncontrolled	Marked	High Visibility	1		1		1	1				1		
Nixon North of Plymouth	Uncontrolled	Marked	High Visibility			1		1					1		
Pittsfield and Jeanne	Roundabout	Marked	Parallel												
Total				1	0	2	0	2	1	0	0	0	2	0	0

Minor/ Major Arterials < 3 Lanes

Location	Crosswalk Type	Pavement Markings	Type of Markings	Adv. Ped Warning Series	Adv. School Warning Series	Ped Warning Series	School Warning Series	Bright Sides	In Lane Signs	Stop Bar	Stop Here for Ped	Over-head	RRFB	Ped. Refuge Island	Curb Ext.
Pontiac Trail and Brookside Dr	Uncontrolled	Marked	High Visibility												
Geddes Ave and Arlington Blvd	Uncontrolled	Marked	High Visibility												
Geddes Ave at Gallup Park Pathway	Uncontrolled	Marked	High Visibility	1		1					1	1	1		
Pontiac Trail south of Arrowwood	Uncontrolled	Marked	High Visibility					1	1					0	1
Fifth Ave at Community High School	Uncontrolled	Marked	High Visibility						1					1	1
Broadway and Divison west of Broadway Bridge	Uncontrolled	Marked	High Visibility	1		1			1					1	
Total				2	0	2	0	1	3	0	1	1	1	2	2

Minor/ Major Arterials ≥ 3 Lanes

Location	Crosswalk Type	Pavement Markings	Type of Markings	Adv. Ped Warning Series	Adv. School Warning Series	Ped Warning Series	School Warning Series	Bright Sides	In Lane Signs	Stop Bar	Stop Here for Ped	Over-head	RRFB	Ped Refuge Island	Curb Ext.
Washtenaw north of Stadium	Uncontrolled	Marked	High Visibility			1				1			1	1	
Stadium blvd between Kipke and Main	Uncontrolled	Marked	High Visibility	1		1			1		1		1		
Maple Rd and Haisley	Uncontrolled	Marked	High Visibility			1		1					1	1	
State St and Ellsworth	Roundabout	Marked	High Visibility								1				
Geddes Rd and Earhart Rd	Roundabout	Marked	High Visibility						1	1	1				
Total				1	0	3	0	1	2	2	3	0	3	2	0

Data Collection Form

Please complete the following information about the crossing location.

Location: #1 PONTIAC TRAIL & BROOKSIDE DR

I. Crossing Information

1. Collect aerial of crosswalk using NearMap or GoogleMaps.

2. Crossing Type:

- Controlled Uncontrolled
 Signal Midblock
 Stop Sign At or adjacent to an intersection
 Roundabout *S LEG*

3. Posted Speed Limit: *In what relation to the speed limit people seem to be driving?*

25

- Faster
 Slower
 About the same
 Not sure

4. Is a bus stop adjacent to the crosswalk?

- Yes No
 Sign Post *NW/NE CORNERS*
 Bench
 Shelter

5. Is a school adjacent to the crosswalk?

- Yes No *→ RUDOLPH STEINER HS TO NORTH*

6. Does a bike facility intersect the crosswalk?

- Yes No

Type?

DASHED LINE
 DEPICTED UNPROTECTED. STRIPED OUT FOR ~~BIKE~~ BUS STOPS

7. Lane Configuration:

A. Number of Lanes

2 LANE

B. On street parking?

- Yes No

Location?

- Curbside Loading Floating

C. Parking Clearance from X-walk:

(Hand-drawn diagram showing a curved line representing clearance)

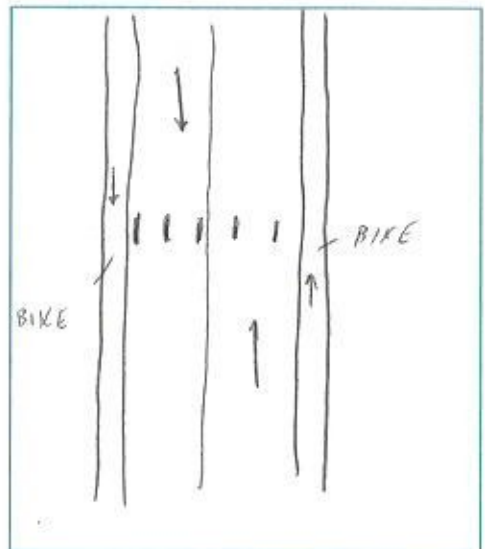
D. Is there a porkchop island?

- Yes No

E. Is there a raised median or pedestrian refuge island?

- Yes No

F. Please describe the cross-section. (Lanes, median, etc.)



Location: _____

Time: _____ Date: _____ Weather: _____

II. Field Data Observations

1. Pavement Markings

- Unmarked crosswalk
- Marked Crosswalk
 - Faded
 - Parallel (or traditional)
 - High-visibility (continental, ladder, or zebra)

Is there a stop bar present at the crossing indicating a location for cars to stop? What is the location relative to the crosswalk?

2. Signage & Signals

Advanced Signage (within 200 ft)

- Warning Series Signage
 - Pedestrian warning series *NONE*
 - School warning series

At Crosswalk

- Warning Series Signage
 - Pedestrian warning series *NONE*
 - School warning series
- Bright sides or post reflectors
- In Street Stop for Pedestrian Sign *NONE*

Number of Signs and Location:

- Signs on island
- Stop here for pedestrian
- Overhead mounted "local law, stop for ped"
- Signals? Associated Push-Button?
 - Pedestrian Hybrid Beacon
 - Rectangular Rapid Flashing Beacon

Other signage:

3. Infrastructure

- Pedestrian Refuge Island
- Curb extension or bumpout
- Roadside placemaking
- Driveway present
- ADA ramp/ detectable warning
- Sidewalk connection
- Additional traffic calming features

*VARIABLE SPEED LIMIT SIGN
5/0 X-WALK*

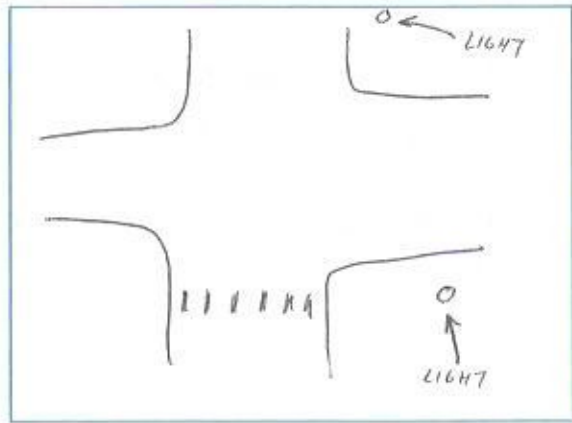
4. Lighting

- At crosswalk (w/in 10 ft)
- Adjacent to crosswalk (10-20 ft)
- No adjacent lighting

Is lighting human-scaled?

- Yes
- No

Draw placement and measure distance from crosswalk.



5. Photos

- Crosswalk
- Signage
- Lighting
- Pavement Markings

Data Collection Form

Please complete the following information about the crossing location.

Location: #2 TRAVER ROAD SOUTH OF JOHN A WOODS DR

I. Crossing Information

1. Collect aerial of crosswalk using NearMap or GoogleMaps.

2. Crossing Type:

- Controlled
 - Signal
 - Stop Sign
 - Roundabout
 - Uncontrolled
 - Midblock
 - At or adjacent to an intersection
- ~ 40' FROM INTERSECTION

3. Posted Speed Limit: *In what relation to the speed limit people seem to be driving?*

25

- Faster
- Slower
- About the same
- Not sure

4. Is a bus stop adjacent to the crosswalk?

- Yes
 - Sign Post
 - Bench
 - Shelter
- No

5. Is a school adjacent to the crosswalk?

- Yes
- No

6. Does a bike facility intersect the crosswalk?

- Yes
- No

Type?

7. Lane Configuration:

A. Number of Lanes

2 LANE

B. On street parking?

- Yes
- No

Location?

- Curbside
- Loading
- Floating

C. Parking Clearance from X-walk:

15-20' MOST SIDES, IMMEDIATELY ADJACENT SW TURNER

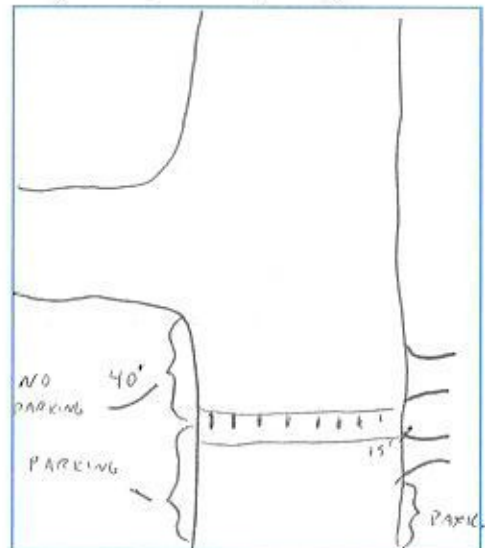
D. Is there a porkchop island?

- Yes
- No

E. Is there a raised median or pedestrian refuge island?

- Yes
- No

F. Please describe the cross-section. (Lanes, median, etc.)



Location: _____

Time: _____

Date: _____

Weather: _____

II. Field Data Observations

1. Pavement Markings

- Unmarked crosswalk
- Marked Crosswalk
 - Faded
 - Parallel (or traditional)
 - High-visibility (continental, ladder, or zebra)

Is there a stop bar present at the crossing indicating a location for cars to stop? What is the location relative to the crosswalk?

2. Signage & Signals

Advanced Signage (within 200 ft)

- Warning Series Signage
 - Pedestrian warning series
 - School warning series *NONE*

At Crosswalk

- Warning Series Signage
 - Pedestrian warning series
 - School warning series *NONE*

- Bright sides or post reflectors
- In Street Stop for Pedestrian Sign

Number of Signs and Location:

- Signs on island
- Stop here for pedestrian *NONE*
- Overhead mounted "local law, stop for ped"
- Signals? Associated Push-Button?
 - Pedestrian Hybrid Beacon
 - Rectangular Rapid Flashing Beacon
- Other signage:

3. Infrastructure

- Pedestrian Refuge Island
- Curb extension or bumpout
- Roadside placemaking
- Driveway present
- ADA ramp/ detectable warning
- Sidewalk connection
- Additional traffic calming features

SPEED BUMPS S/O X-WALK

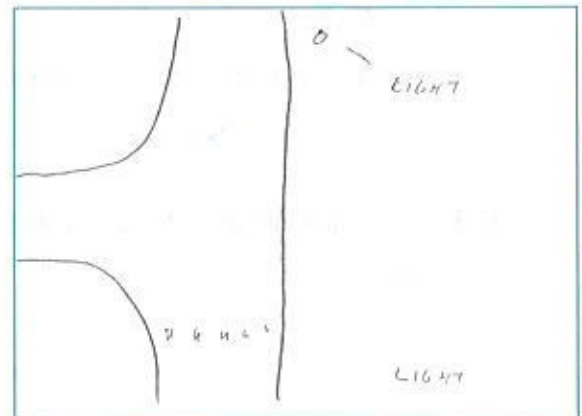
4. Lighting

- At crosswalk (w/in 10 ft)
- Adjacent to crosswalk (10-20 ft)
- No adjacent lighting

Is lighting human-scaled?

- Yes *POLE MOUNTED LIGHTS*
- No *E SIDE > 80' FROM X-WALK*

Draw placement and measure distance from crosswalk.



5. Photos

- Crosswalk
- Signage
- Lighting
- Pavement Markings

Data Collection Form

Please complete the following information about the crossing location.

Location: #3 BEDDES AVE & ARLINGTON BLVD

I. Crossing Information

1. Collect aerial of crosswalk using NearMap or GoogleMaps.

2. Crossing Type:

- Controlled Uncontrolled
- Signal Midblock
- Stop Sign At or adjacent to an intersection
- Roundabout

3. Posted Speed Limit: *In what relation to the speed limit people seem to be driving?*

25

- Faster
- Slower
- About the same
- Not sure

4. Is a bus stop adjacent to the crosswalk?

- Yes No
- Sign Post
- Bench
- Shelter

5. Is a school adjacent to the crosswalk?

- Yes No

6. Does a bike facility intersect the crosswalk?

- Yes No

Type?

DEDICATED UNPROTECTED WB ONLY

7. Lane Configuration:

A. Number of Lanes

2 LANE

B. On street parking?

- Yes No

Location?

- Curbside Loading Floating

C. Parking Clearance from X-walk:

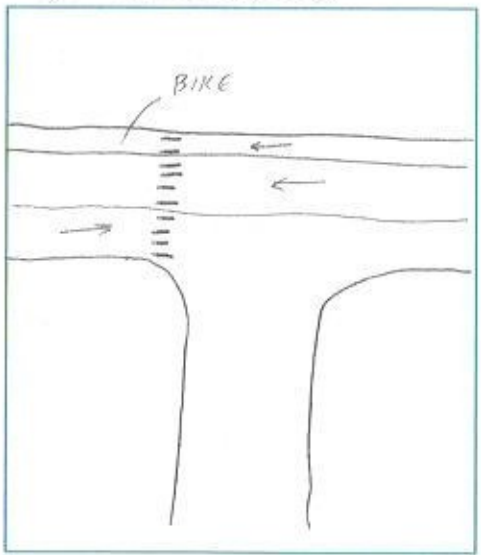
D. Is there a porkchop island?

- Yes No

E. Is there a raised median or pedestrian refuge island?

- Yes No

F. Please describe the cross-section. (Lanes, median, etc.)



Location: _____

Time: _____

Date: _____

Weather: _____

II. Field Data Observations

1. Pavement Markings

- Unmarked crosswalk
- Marked Crosswalk
 - Faded
 - Parallel (or traditional)
 - High-visibility (continental, ladder, or zebra)

Is there a stop bar present at the crossing indicating a location for cars to stop? What is the location relative to the crosswalk?

2. Signage & Signals

Advanced Signage (within 200 ft)

- Warning Series Signage
 - Pedestrian warning series *NONE*
 - School warning series

At Crosswalk

- Warning Series Signage
 - Pedestrian warning series *NONE*
 - School warning series

- Bright sides or post reflectors
- In Street Stop for Pedestrian Sign

Number of Signs and Location:

- Signs on island *NONE*
- Stop here for pedestrian
- Overhead mounted "local law, stop for ped"
- Signals? Associated Push-Button?
 - Pedestrian Hybrid Beacon
 - Rectangular Rapid Flashing Beacon

3. Infrastructure

- Pedestrian Refuge Island
- Curb extension or bumpout
- Roadside placemaking
- Driveway present
- ADA ramp/ detectable warning
- Sidewalk connection
- Additional traffic calming features

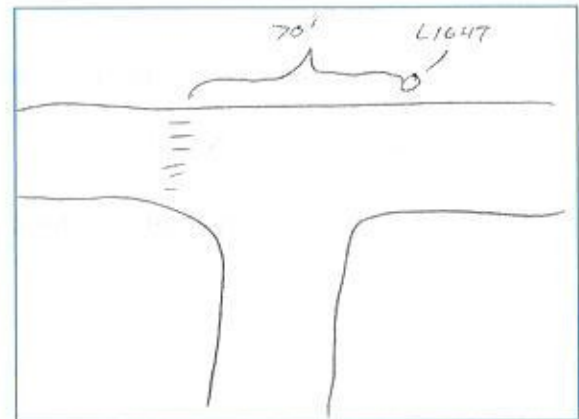
4. Lighting

- At crosswalk (w/in 10 ft)
- Adjacent to crosswalk (10-20 ft)
- No adjacent lighting

Is lighting human-scaled?

- Yes
- No

Draw placement and measure distance from crosswalk.



5. Photos

- Crosswalk
- Signage
- Lighting
- Pavement Markings

Data Collection Form

Please complete the following information about the crossing location.

Location: #4 GEDDES AVE @ GALLUP PARK PATHWAY

I. Crossing Information

1. Collect aerial of crosswalk using NearMap or GoogleMaps.

2. Crossing Type:

- Controlled Uncontrolled
- Signal Midblock
- Stop Sign At or adjacent to an intersection
- Roundabout FROM GEDDES RIDGE

3. Posted Speed Limit: *In what relation to the speed limit people seem to be driving?*

- 25
- Faster
- Slower
- About the same
- Not sure

4. Is a bus stop adjacent to the crosswalk?

- Yes No
- Sign Post
- Bench
- Shelter

5. Is a school adjacent to the crosswalk?

- Yes No

6. Does a bike facility intersect the crosswalk?

- Yes No

Type?

DEDICATED, UNPROTECTED, WB ONLY

7. Lane Configuration:

A. Number of Lanes

2 LANE

B. On street parking?

- Yes No

Location?

- Curbside Loading Floating

C. Parking Clearance from X-walk:

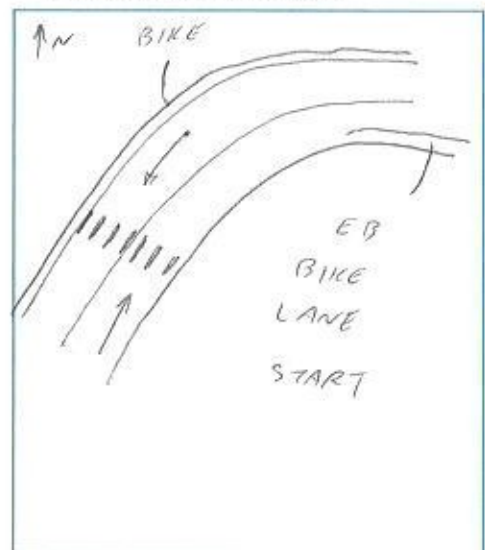
D. Is there a porkchop island?

- Yes No

E. Is there a raised median or pedestrian refuge island?

- Yes No

F. Please describe the cross-section. (Lanes, median, etc.)



Location: _____

Time: _____

Date: _____

Weather: _____

II. Field Data Observations

1. Pavement Markings

- Unmarked crosswalk
- Marked Crosswalk
 - Faded
 - Parallel (or traditional)
 - High-visibility (continental, ladder, or zebra)

Is there a stop bar present at the crossing indicating a location for cars to stop? What is the location relative to the crosswalk?

2. Signage & Signals

Advanced Signage (within 200 ft)

- Warning Series Signage
 - Pedestrian warning series 340' WB
 - School warning series 250' EB
- BOTH HAVE BEACONS ATTACHED TO PUSH BUTTON

At Crosswalk

- Warning Series Signage
- Pedestrian warning series
- School warning series

- Bright sides or post reflectors
- In Street Stop for Pedestrian Sign

Number of Signs and Location:

- Signs on island
- Stop here for pedestrian
- Overhead mounted "local law, stop for ped"
- Signals? Associated Push-Button?
 - Pedestrian Hybrid Beacon
 - Rectangular Rapid Flashing Beacon

Other signage:

ADDITIVE CROSS STREET w/ CAUTION, VEHICLES MAY NOT STOP

3. Infrastructure

- Pedestrian Refuge Island
- Curb extension or bumpout
- Roadside placemaking
- Driveway present
- ADA ramp/ detectable warning
- Sidewalk connection
- Additional traffic calming features

4. Lighting

- At crosswalk (w/in 10 ft)
- Adjacent to crosswalk (10-20 ft)
- No adjacent lighting

Is lighting human-scaled?

- Yes
- No

Draw placement and measure distance from crosswalk.

} ATTACHED TO OVERHEAD SIGNAGE MAST ARMS

5. Photos

- Crosswalk
- Signage
- Lighting
- Pavement Markings

Data Collection Form

Please complete the following information about the crossing location.

Location: #5 PONTIAC TRAIL S/O ARROWHEAD

I. Crossing Information

1. Collect aerial of crosswalk using NearMap or GoogleMaps.

2. Crossing Type:

- Controlled Uncontrolled
- Signal Midblock
- Stop Sign At or adjacent to an intersection
- Roundabout

3. Posted Speed Limit: *In what relation to the speed limit people seem to be driving?*

30

- Faster
- Slower
- About the same
- Not sure

4. Is a bus stop adjacent to the crosswalk?

- Yes No
- Sign Post
- Bench
- Shelter

5. Is a school adjacent to the crosswalk?

- Yes No → RUDOLPH STEINER HS TO THE SOUTH

6. Does a bike facility intersect the crosswalk?

- Yes No

Type?

NB/SB DEDICATED BIKE LANE UNPROTECTED

7. Lane Configuration:

A. Number of Lanes

2 LANE

B. On street parking?

- Yes No

Location?

- Curbside Loading Floating

C. Parking Clearance from X-walk:

D. Is there a porkchop island?

- Yes No

E. Is there a raised median or pedestrian refuge island?

- Yes No

F. Please describe the cross-section. (Lanes, median, etc.)

Location: _____

Time: _____

Date: _____

Weather: _____

II. Field Data Observations

1. Pavement Markings

- Unmarked crosswalk
- Marked Crosswalk
 - Faded
 - Parallel (or traditional)
 - High-visibility (continental, ladder, or zebra)

Is there a ~~stop bar~~ present at the crossing indicating a location for cars to stop? What is the location relative to the crosswalk?

2. Signage & Signals

Advanced Signage (within 200 ft)

- Warning Series Signage
- Pedestrian warning series *165' NB*
- School warning series *90' SB*

At Crosswalk

- Warning Series Signage *W11-2, W16-7P*
- Pedestrian warning series
- School warning series

- Bright sides or post reflectors
- In Street Stop for Pedestrian Sign

Number of Signs and Location:

2	NB	CENTER LINE + BIKE LANE
2	SB	

- Signs on island
- Stop here for pedestrian
- Overhead mounted "local law, stop for ped"
- Signals? Associated Push-Button?
 - Pedestrian Hybrid Beacon
 - Rectangular Rapid Flashing Beacon
- Other signage:

3. Infrastructure

- Pedestrian Refuge Island
- Curb extension or bumpout
- Roadside placemaking
- Driveway present
- ADA ramp/ detectable warning
- Sidewalk connection
- Additional traffic calming features

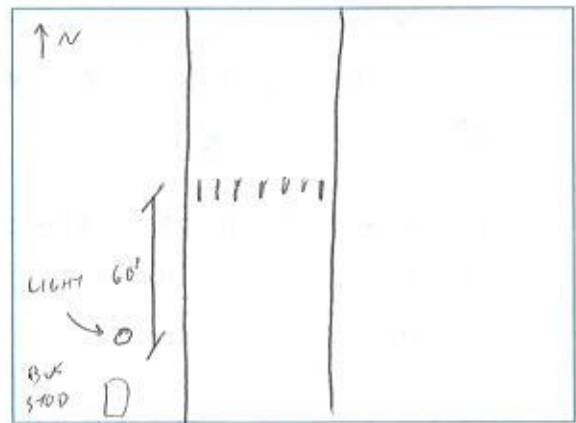
4. Lighting

- At crosswalk (w/in 10 ft)
- Adjacent to crosswalk (10-20 ft)
- No adjacent lighting

Is lighting human-scaled? *~60' TO SOUTH (BUS STOP)*

- Yes
- No

Draw placement and measure distance from crosswalk.



5. Photos

- Crosswalk
- Signage
- Lighting
- Pavement Markings

Data Collection Form

Please complete the following information about the crossing location.

Location: #6 FIFTH AVE @ COMMUNITY HIGH SCHOOL

I. Crossing Information

1. Collect aerial of crosswalk using NearMap or GoogleMaps.

2. Crossing Type:

- Controlled Uncontrolled
- Signal Midblock
- Stop Sign At or adjacent to an intersection
- Roundabout S LEG @ DETROIT

3. Posted Speed Limit: *In what relation to the speed limit people seem to be driving?*

25?

- Faster
- Slower
- About the same
- Not sure

4. Is a bus stop adjacent to the crosswalk?

- Yes No
- Sign Post 7057 S/O
- Bench DETROIT W LEG, W SIDE
- Shelter

5. Is a school adjacent to the crosswalk?

- Yes No

6. Does a bike facility intersect the crosswalk?

- Yes No

Type?

DEDICATED BIKE LANE, UNROOT.

7. Lane Configuration:

A. Number of Lanes

2 LANE - 1 WAY

B. On street parking?

- Yes No

Location?

- Curbside Loading Floating

10' S/O MIDDLE X-WALK

C. Parking Clearance from X-walk:

10'

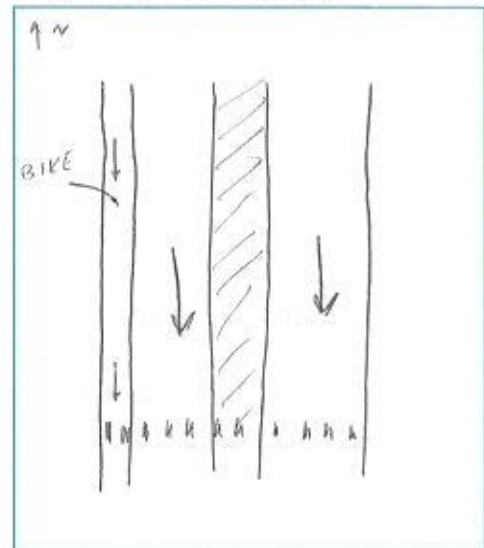
D. Is there a porkchop island?

- Yes No

E. Is there a raised median or pedestrian refuge island?

- Yes No

F. Please describe the cross-section. (Lanes, median, etc.)



Location: _____

Time: _____

Date: _____

Weather: _____

II. Field Data Observations

1. Pavement Markings

- Unmarked crosswalk
- Marked Crosswalk
 - Faded
 - Parallel (or traditional)
 - High-visibility (continental, ladder, or zebra)

Is there a stop bar present at the crossing indicating a location for cars to stop? What is the location relative to the crosswalk?

2. Signage & Signals

Advanced Signage (within 200 ft)

- Warning Series Signage
 - Pedestrian warning series
 - School warning series *NONE*

At Crosswalk

- Warning Series Signage
 - Pedestrian warning series *NONE*
 - School warning series

- Bright sides or post reflectors

In Street Stop for Pedestrian Sign

Number of Signs and Location:

*IN MEDIAN (1 / X-WALK)
R-6A*

Signs on island

- Stop here for pedestrian
- Overhead mounted "local law, stop for ped"
- Signals? Associated Push-Button?
 - Pedestrian Hybrid Beacon
 - Rectangular Rapid Flashing Beacon

Other signage:

3. Infrastructure

- Pedestrian Refuge Island
- Curb extension or bumpout
- Roadside placemaking
- Driveway present
- ADA ramp/ detectable warning
- Sidewalk connection
- Additional traffic calming features

*PAVEMENT COLORATION/PAVERS,
LOW CURBS*

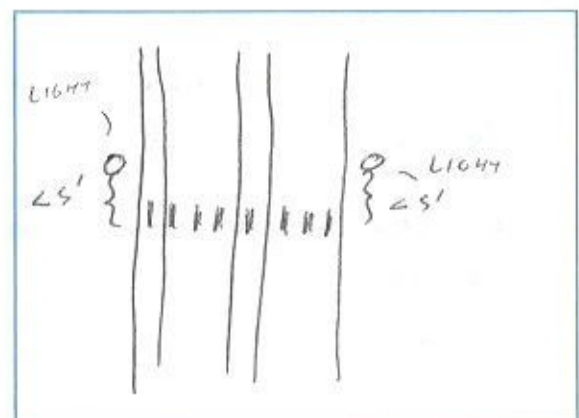
4. Lighting

- At crosswalk (w/in 10 ft)
- Adjacent to crosswalk (10-20 ft)
- No adjacent lighting

Is lighting human-scaled?

- Yes
- No

Draw placement and measure distance from crosswalk.



5. Photos

- Crosswalk
- Signage
- Lighting
- Pavement Markings

Data Collection Form

Please complete the following information about the crossing location.

Location: #7 BROADWAY/DIVISION W/O BROADWAY BRIDGE

I. Crossing Information

1. Collect aerial of crosswalk using NearMap or GoogleMaps.

2. Crossing Type:

- Controlled
- Uncontrolled
- Signal
- Stop Sign
- Roundabout
- Midblock
- At or adjacent to an intersection

NE LEG TO BRIDGE

3. Posted Speed Limit: 30 In what relation to the speed limit people seem to be driving?

CARS COME FAST SB DOWNHILL OFF BRIDGE NB COMES DOWNHILL TOO

- Faster
- Slower
- About the same
- Not sure

4. Is a bus stop adjacent to the crosswalk?

- Yes
- No
- Sign Post
- Bench
- Shelter

5. Is a school adjacent to the crosswalk?

- Yes
- No

6. Does a bike facility intersect the crosswalk?

- Yes
- No

Type?

LOOKS LIKE THEY'RE PAINTING A CYCLE TRACK ON NB BROADWAY?

7. Lane Configuration:

A. Number of Lanes

~~2 LANES EACH CROSSING~~

SEE BELOW

B. On street parking?

- Yes
- No

Location?

- Curbside
- Loading
- Floating

C. Parking Clearance from X-walk:

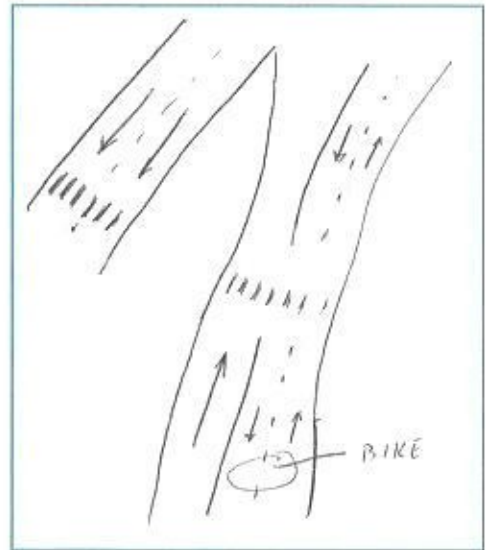
D. Is there a porkchop island?

- Yes
- No

E. Is there a raised median or pedestrian refuge island?

- Yes
- No

F. Please describe the cross-section. (Lanes, median, etc.)



Location: _____

Time: _____

Date: _____

Weather: _____

II. Field Data Observations

1. Pavement Markings

- Unmarked crosswalk
- Marked Crosswalk
 - Faded
 - Parallel (or traditional)
 - High-visibility (continental, ladder, or zebra)

Is there a stop bar present at the crossing indicating a location for cars to stop? What is the location relative to the crosswalk?

2. Signage & Signals

Advanced Signage (within 200 ft)

- Warning Series Signage *w11-2 ~ 230' SB*
 - Pedestrian warning series *- none NB,*
 - School warning series

At Crosswalk

- Warning Series Signage
 - Pedestrian warning series *w16-7P, w11-2*
 - School warning series

- Bright sides or post reflectors
- In Street Stop for Pedestrian Sign - R1-6A *(x3)*

Number of Signs and Location:
*1 / PER SIDE (2 TOTAL) CENTERLINE
B/W THRU LANES, 1 ON MEDIAN*

- Signs on island
 - Stop here for pedestrian
 - Overhead mounted "local law, stop for ped"
 - Signals? Associated Push-Button?
 - Pedestrian Hybrid Beacon
 - Rectangular Rapid Flashing Beacon

MEDIAN WARNINGS

3. Infrastructure

- Pedestrian Refuge Island
- Curb extension or bumpout
- Roadside placemaking
- Driveway present
- ADA ramp/ detectable warning
- Sidewalk connection
- Additional traffic calming features

*MISSING ADA PLASTIC ON 2
APPROACHES*

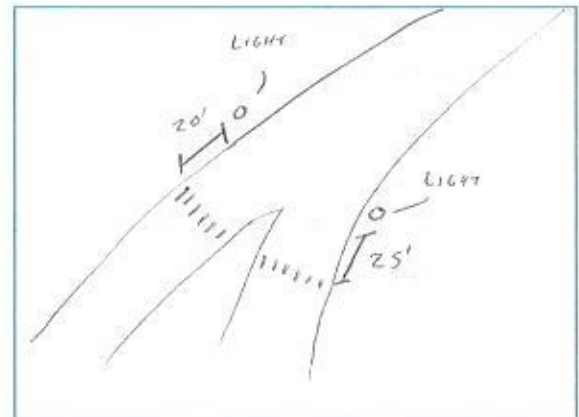
4. Lighting

- At crosswalk (w/in 10 ft)
- Adjacent to crosswalk (10-20 ft)
- No adjacent lighting

Is lighting human-scaled?

- Yes
- No

Draw placement and measure distance from crosswalk.



5. Photos

- Crosswalk
- Signage
- Lighting
- Pavement Markings

Data Collection Form

Please complete the following information about the crossing location.

Location: #8 GREEN & HUBBARD

I. Crossing Information

1. Collect aerial of crosswalk using NearMap or GoogleMaps.

2. Crossing Type:

- Controlled Uncontrolled
- Signal Midblock
- Stop Sign At or adjacent to an intersection
- Roundabout *N LEG*

3. Posted Speed Limit: *In what relation to the speed limit people seem to be driving?*

35

- Faster
- Slower
- About the same
- Not sure

4. Is a bus stop adjacent to the crosswalk?

- Yes No
- Sign Post *NE CORNER*
- Bench
- Shelter

5. Is a school adjacent to the crosswalk?

- Yes No

6. Does a bike facility intersect the crosswalk?

- Yes No

Type?

DEDICATED, UNPROTECTED NB/SB

7. Lane Configuration:

A. Number of Lanes

3-LANE (TWLTL)

B. On street parking?

- Yes No

Location?

- Curbside Loading Floating

C. Parking Clearance from X-walk:

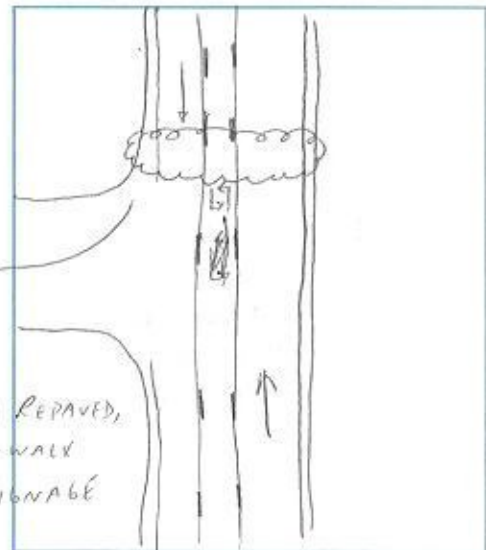
D. Is there a porkchop island?

- Yes No

E. Is there a raised median or pedestrian refuge island?

- Yes No

F. Please describe the cross-section. (Lanes, median, etc.)



Location: _____

Time: _____

Date: _____

Weather: _____

II. Field Data Observations

1. Pavement Markings

- Unmarked crosswalk
- Marked Crosswalk *NO X-WALKS*
 - Faded *BEING REPAVED*
 - Parallel (or traditional)
 - High-visibility (continental, ladder, or zebra)

Is there a stop bar present at the crossing indicating a location for cars to stop? What is the location relative to the crosswalk?



2. Signage & Signals

Advanced Signage (within 200 ft)

- Warning Series Signage
 - Pedestrian warning series
 - School warning series *NONE*

At Crosswalk

- Warning Series Signage
 - Pedestrian warning series *NONE*
 - School warning series

- Bright sides or post reflectors
- In Street Stop for Pedestrian Sign

Number of Signs and Location:



- Signs on island
- Stop here for pedestrian
- Overhead mounted "local law, stop for ped"
- Signals? Associated Push-Button?
 - Pedestrian Hybrid Beacon
 - Rectangular Rapid Flashing Beacon

Other signage:



3. Infrastructure

- Pedestrian Refuge Island
- Curb extension or bumpout
- Roadside placemaking
- Driveway present
- ADA ramp/ detectable warning
- Sidewalk connection
- Additional traffic calming features



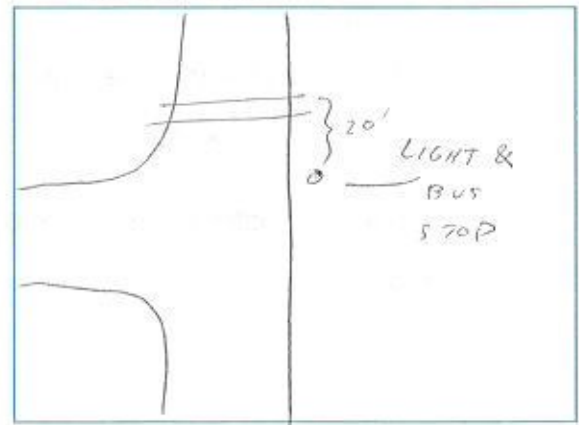
4. Lighting

- At crosswalk (w/in 10 ft)
- Adjacent to crosswalk (10-20 ft)
- No adjacent lighting

Is lighting human-scaled?

- Yes
- No

Draw placement and measure distance from crosswalk.



5. Photos

- Crosswalk
- Signage
- Lighting
- Pavement Markings

Data Collection Form

Please complete the following information about the crossing location.

Location: #9 GREEN RD & BURBANK

I. Crossing Information

1. Collect aerial of crosswalk using NearMap or GoogleMaps.

2. Crossing Type:

- Controlled Uncontrolled
- Signal Midblock
- Stop Sign At or adjacent to an intersection
- Roundabout *N LEG*

3. Posted Speed Limit: *In what relation to the speed limit people seem to be driving?*

- Faster
- Slower
- About the same
- Not sure

4. Is a bus stop adjacent to the crosswalk?

- Yes No
- Sign Post
- Bench
- Shelter

5. Is a school adjacent to the crosswalk?

- Yes No

6. Does a bike facility intersect the crosswalk?

- Yes No

Type?

7. Lane Configuration:

A. Number of Lanes

S LEG: 5 LANE
N LEG: 3 LANE

B. On street parking?

- Yes No

Location?

- Curbside Loading Floating

C. Parking Clearance from X-walk:

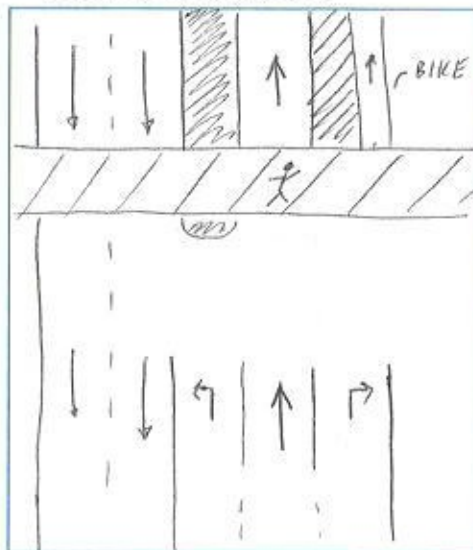
D. Is there a porkchop island?

- Yes No

E. Is there a raised median or pedestrian refuge island?

- Yes No

F. Please describe the cross-section. (Lanes, median, etc.)



Location: _____

Time: _____

Date: _____

Weather: _____

II. Field Data Observations

1. Pavement Markings

- Unmarked crosswalk
- Marked Crosswalk
 - Faded
 - Parallel (or traditional)
 - High-visibility (continental, ladder, or zebra)

Is there a stop bar present at the crossing indicating a location for cars to stop? What is the location relative to the crosswalk?

2. Signage & Signals

Advanced Signage (within 200 ft)

- Warning Series Signage
 - Pedestrian warning series NB: 320'
 - School warning series

At Crosswalk

- Warning Series Signage
 - Pedestrian warning series
 - School warning series
- Bright sides or post reflectors
- In Street Stop for Pedestrian Sign

Number of Signs and Location:

- Signs on island
- Stop here for pedestrian
- Overhead mounted "local law, stop for ped"
- Signals? Associated Push-Button?
 - Pedestrian Hybrid Beacon
 - Rectangular Rapid Flashing Beacon

Other signage:

ADDITIONAL: CROSS STREET WITH CAUTION
VEHICLES MAY NOT STOP

3. Infrastructure

- Pedestrian Refuge Island
- Curb extension or bumpout
- Roadside placemaking
- Driveway present
- ADA ramp/ detectable warning
- Sidewalk connection
- Additional traffic calming features

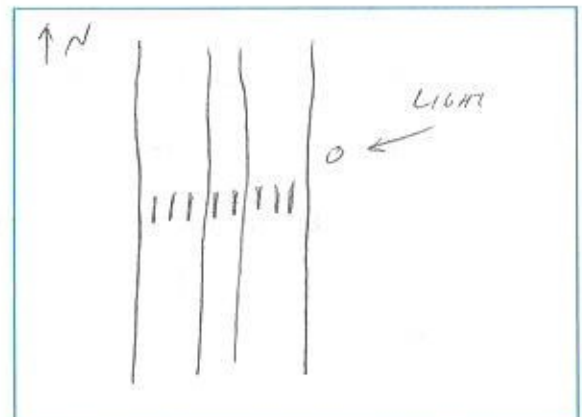
4. Lighting

- At crosswalk (w/in 10 ft)
- Adjacent to crosswalk (10-20 ft)
- No adjacent lighting

Is lighting human-scaled?

- Yes
- No

Draw placement and measure distance from crosswalk.



5. Photos

- Crosswalk
- Signage
- Lighting
- Pavement Markings

Data Collection Form

Please complete the following information about the crossing location.

Location: #10 TAPPAN AVENUE & OAKLAND AVE

I. Crossing Information

1. Collect aerial of crosswalk using NearMap or GoogleMaps.

2. Crossing Type:

- Controlled Uncontrolled
- Signal Midblock
- Stop Sign At or adjacent to an intersection
- Roundabout

3. Posted Speed Limit:

25 (ASSUMED)

- S LEG
In what relation to the speed limit people seem to be driving?
- Faster
- Slower
- About the same
- Not sure

4. Is a bus stop adjacent to the crosswalk?

- Yes No
- Sign Post
- Bench
- Shelter

5. Is a school adjacent to the crosswalk?

- Yes No

6. Does a bike facility intersect the crosswalk?

- Yes No

Type?

7. Lane Configuration:

A. Number of Lanes

2

B. On street parking?

- Yes No

Location?

- Curbside Loading Floating

C. Parking Clearance from X-walk:

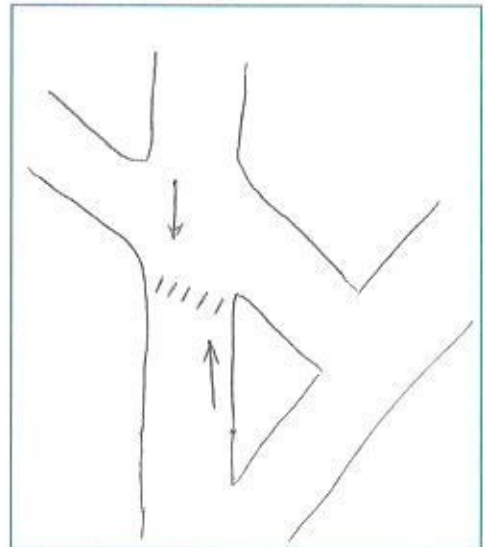
D. Is there a porkchop island?

- Yes No

E. Is there a raised median or pedestrian refuge island?

- Yes No

F. Please describe the cross-section. (Lanes, median, etc.)



Location: _____

Time: _____

Date: _____

Weather: _____

II. Field Data Observations

1. Pavement Markings

- Unmarked crosswalk
- Marked Crosswalk
 - Faded
 - Parallel (or traditional)
 - High-visibility (continental, ladder, or zebra)

Is there a stop bar present at the crossing indicating a location for cars to stop? What is the location relative to the crosswalk?

2. Signage & Signals

Advanced Signage (within 200 ft)

- Warning Series Signage
 - Pedestrian warning series
 - School warning series *NONE*

At Crosswalk

- Warning Series Signage
 - Pedestrian warning series
 - School warning series *NONE*

- Bright sides or post reflectors
- In Street Stop for Pedestrian Sign

Number of Signs and Location:

- Signs on island
- Stop here for pedestrian *NONE*
- Overhead mounted "local law, stop for ped"
- Signals? Associated Push-Button?
 - Pedestrian Hybrid Beacon
 - Rectangular Rapid Flashing Beacon

Other signage:

3. Infrastructure

- Pedestrian Refuge Island
- Curb extension or bumpout
- Roadside placemaking
- Driveway present
- ADA ramp/ detectable warning
- Sidewalk connection
- Additional traffic calming features

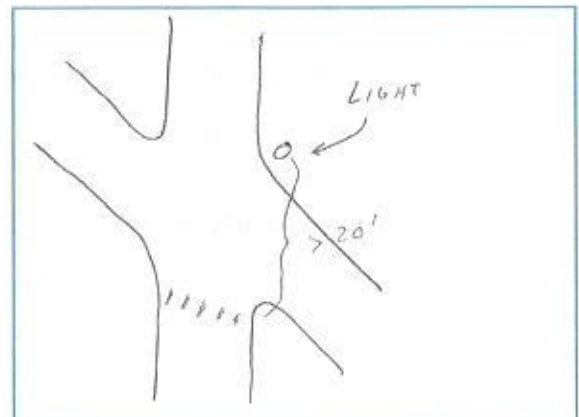
4. Lighting

- At crosswalk (w/in 10 ft)
- Adjacent to crosswalk (10-20 ft)
- No adjacent lighting

Is lighting human-scaled?

- Yes
- No

Draw placement and measure distance from crosswalk.



5. Photos

- Crosswalk
- Signage
- Lighting
- Pavement Markings

Data Collection Form

Please complete the following information about the crossing location.

Location: #11 WASHTEENAW N/O STADIUM BLVD

I. Crossing Information

1. Collect aerial of crosswalk using NearMap or GoogleMaps.

2. Crossing Type:

- Controlled Uncontrolled
- Signal Midblock
- Stop Sign At or adjacent to an intersection
- Roundabout

3. Posted Speed Limit: *In what relation to the speed limit people seem to be driving?*

- Faster
- Slower
- About the same
- Not sure

4. Is a bus stop adjacent to the crosswalk?

- Yes No
- Sign Post *BOTH SIDES*
- Bench
- Shelter

5. Is a school adjacent to the crosswalk?

- Yes No

6. Does a bike facility intersect the crosswalk?

- Yes No

Type?

7. Lane Configuration:

A. Number of Lanes

B. On street parking?

- Yes No

Location?

- Curbside Loading Floating

C. Parking Clearance from X-walk:

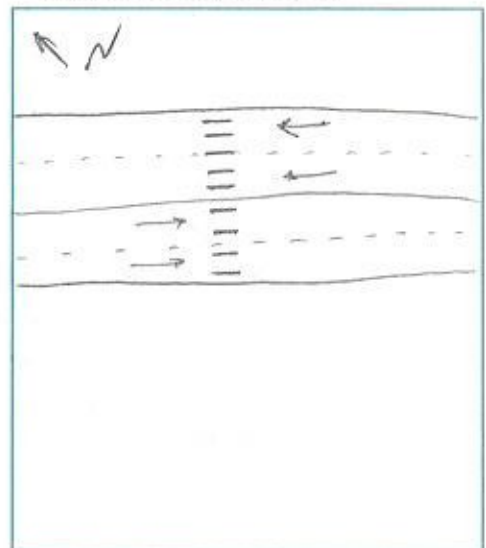
D. Is there a porkchop island?

- Yes No

E. Is there a raised median or pedestrian refuge island?

- Yes No

F. Please describe the cross-section. (Lanes, median, etc.)



Location: _____

Time: _____

Date: _____

Weather: _____

II. Field Data Observations

1. Pavement Markings

- Unmarked crosswalk
- Marked Crosswalk
 - Faded
 - Parallel (or traditional)
 - High-visibility (continental, ladder, or zebra)

Is there a stop bar present at the crossing indicating a location for cars to stop? What is the location relative to the crosswalk?

YES → 35' UPSTREAM BOTH SIDES

2. Signage & Signals

Advanced Signage (within 200 ft)

- Warning Series Signage
 - Pedestrian warning series *NONE*
 - School warning series

At Crosswalk

- Warning Series Signage
 - Pedestrian warning series
 - School warning series
- Bright sides or post reflectors
- In Street Stop for Pedestrian Sign

Number of Signs and Location:

- Signs on island
- Stop here for pedestrian
- Overhead mounted "local law, stop for ped"
- Signals? Associated Push-Button?
 - Pedestrian Hybrid Beacon
 - Rectangular Rapid Flashing Beacon
- Other signage:

3. Infrastructure

- Pedestrian Refuge Island
- Curb extension or bumpout
- Roadside placemaking
- Driveway present
- ADA ramp/ detectable warning
- Sidewalk connection
- Additional traffic calming features

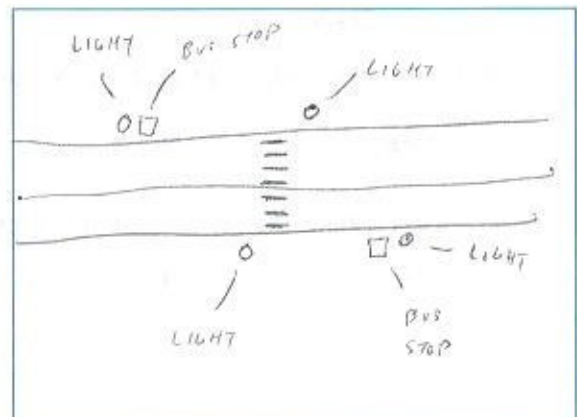
4. Lighting

- At crosswalk (w/in 10 ft)
- Adjacent to crosswalk (10-20 ft)
- No adjacent lighting

Is lighting human-scaled?

- Yes
- No

Draw placement and measure distance from crosswalk.



5. Photos

- Crosswalk
- Signage
- Lighting
- Pavement Markings

Data Collection Form

Please complete the following information about the crossing location.

Location: #12 FERNWOOD AVE & LORRAINE ST

I. Crossing Information

1. Collect aerial of crosswalk using NearMap or GoogleMaps.

2. Crossing Type:

- Controlled Uncontrolled
- Signal Midblock
- Stop Sign At or adjacent to an intersection
- Roundabout E LEG

3. Posted Speed Limit: *In what relation to the speed limit people seem to be driving?*

25

- Faster
- Slower
- About the same
- Not sure

4. Is a bus stop adjacent to the crosswalk?

- Yes No
- Sign Post
- Bench
- Shelter

5. Is a school adjacent to the crosswalk?

- Yes No

6. Does a bike facility intersect the crosswalk?

- Yes No

Type?

7. Lane Configuration:

A. Number of Lanes

2

B. On street parking?

- Yes No
- Location?

- Curbside Loading Floating

C. Parking Clearance from X-walk:

SEE BELOW

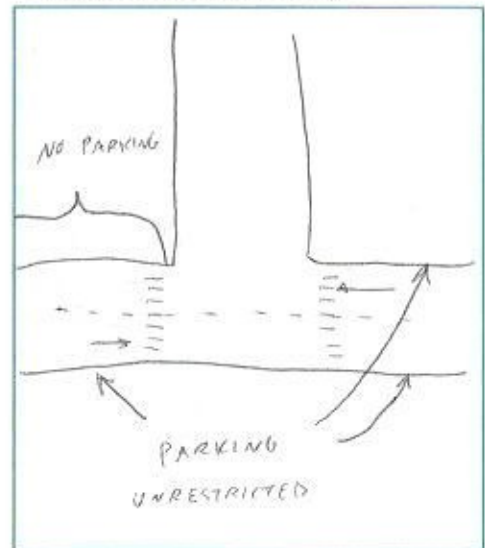
D. Is there a porkchop island?

- Yes No

E. Is there a raised median or pedestrian refuge island?

- Yes No

F. Please describe the cross-section. (Lanes, median, etc.)



Location: _____

Time: _____

Date: _____

Weather: _____

II. Field Data Observations

1. Pavement Markings

- Unmarked crosswalk
- Marked Crosswalk
 - Faded
 - Parallel (or traditional)
 - High-visibility (continental, ladder, or zebra)

Is there a stop bar present at the crossing indicating a location for cars to stop? What is the location relative to the crosswalk?

2. Signage & Signals

Advanced Signage (within 200 ft)

- Warning Series Signage
 - Pedestrian warning series
 - School warning series EB: 160'

At Crosswalk

- Warning Series Signage
 - Pedestrian warning series
 - School warning series
- Bright sides or post reflectors
- In Street Stop for Pedestrian Sign

Number of Signs and Location:

- Signs on island
- Stop here for pedestrian
- Overhead mounted "local law, stop for ped"
- Signals? Associated Push-Button?
 - Pedestrian Hybrid Beacon
 - Rectangular Rapid Flashing Beacon

Other signage:

3. Infrastructure

- Pedestrian Refuge Island
- Curb extension or bumpout
- Roadside placemaking
- Driveway present
- ADA ramp/ detectable warning
- Sidewalk connection
- Additional traffic calming features

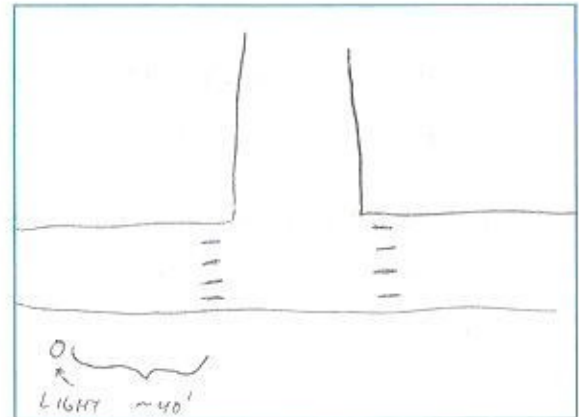
4. Lighting

- At crosswalk (w/in 10 ft)
- Adjacent to crosswalk (10-20 ft)
- No adjacent lighting

Is lighting human-scaled?

- Yes
- No

Draw placement and measure distance from crosswalk.



5. Photos

- Crosswalk
- Signage
- Lighting
- Pavement Markings

Data Collection Form

Please complete the following information about the crossing location.

Location: #13 STADIUM BLVD BIW KIPKE/MAIN

I. Crossing Information

1. Collect aerial of crosswalk using NearMap or GoogleMaps.

2. Crossing Type:

- Controlled Uncontrolled
- Signal Midblock
- Stop Sign At or adjacent to an intersection
- Roundabout

3. Posted Speed Limit: *In what relation to the speed limit people seem to be driving?*

35

- Faster
- Slower
- About the same
- Not sure

4. Is a bus stop adjacent to the crosswalk?

- Yes No
- Sign Post
- Bench
- Shelter

5. Is a school adjacent to the crosswalk?

- Yes No

6. Does a bike facility intersect the crosswalk?

- Yes No

Type?

DEDICATED UNPROTECTED BOTH DIRECTIONS

7. Lane Configuration:

A. Number of Lanes

5-LANE (TWLTL)

B. On street parking?

- Yes No

Location?

- Curbside Loading Floating

C. Parking Clearance from X-walk:

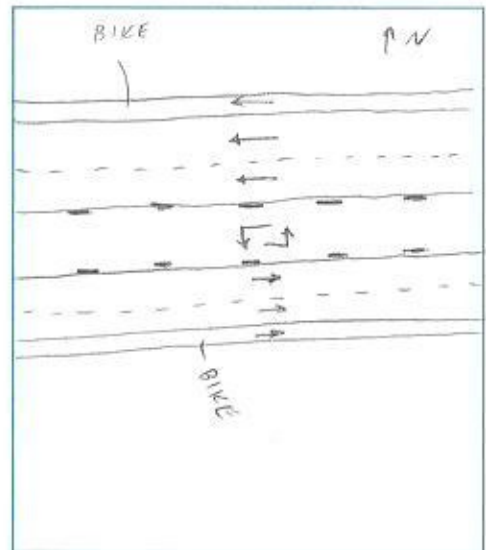
D. Is there a porkchop island?

- Yes No

E. Is there a raised median or pedestrian refuge island?

- Yes No

F. Please describe the cross-section. (Lanes, median, etc.)



Location: _____

Time: _____ Date: _____ Weather: _____

II. Field Data Observations

1. Pavement Markings

- Unmarked crosswalk
- Marked Crosswalk
 - Faded
 - Parallel (or traditional)
 - High-visibility (continental, ladder, or zebra)

Is there a stop bar present at the crossing indicating a location for cars to stop? What is the location relative to the crosswalk?

YES → 20' UPSTREAM BOTH DIRECTIONS

2. Signage & Signals

Advanced Signage (within 200 ft)

- Warning Series Signage
 - Pedestrian warning series WB: 330'
 - School warning series EB: 355'

At Crosswalk

- Warning Series Signage
 - Pedestrian warning series
 - School warning series
- Bright sides or post reflectors
- In Street Stop for Pedestrian Sign

Number of Signs and Location:

2: BOTH IN MEDIUM

- Signs on island
- Stop here for pedestrian x 2
- Overhead mounted "local law, stop for ped"
- Signals? Associated Push-Button?
 - Pedestrian Hybrid Beacon
 - Rectangular Rapid Flashing Beacon

Other signage:

↓
110055 STREET
AUDIBLE: W/CAUTION,
VEHICLES MAY
NOT STOP!!

3. Infrastructure

- Pedestrian Refuge Island
- Curb extension or bumpout
- Roadside placemaking
- Driveway present
- ADA ramp/ detectable warning
- Sidewalk connection
- Additional traffic calming features

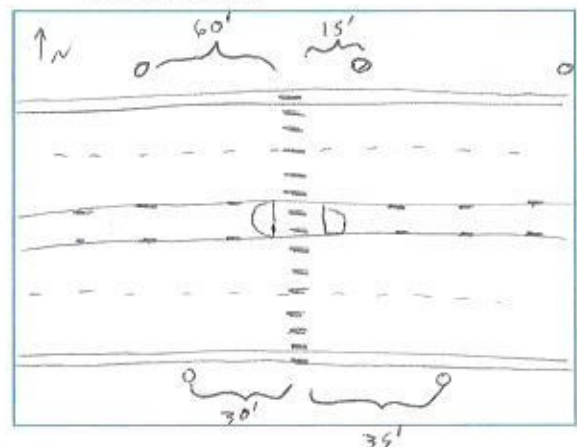
4. Lighting

- At crosswalk (w/in 10 ft)
- Adjacent to crosswalk (10-20 ft)
- No adjacent lighting

Is lighting human-scaled?

- Yes
- No

Draw placement and measure distance from crosswalk.



5. Photos

- Crosswalk
- Signage
- Lighting
- Pavement Markings

Data Collection Form

Please complete the following information about the crossing location.

Location: #14 DELAWARE DR BIW MERSHON/7TH

I. Crossing Information

1. Collect aerial of crosswalk using NearMap or GoogleMaps.

2. Crossing Type:

- Controlled Uncontrolled
- Signal Midblock
- Stop Sign At or adjacent to an intersection
- Roundabout

3. Posted Speed Limit: *In what relation to the speed limit people seem to be driving?*

- 25 (ASSUMED)
- Faster
- Slower
- About the same
- Not sure
→ low volume

4. Is a bus stop adjacent to the crosswalk?

- Yes No
- Sign Post
- Bench
- Shelter

5. Is a school adjacent to the crosswalk?

- Yes No

6. Does a bike facility intersect the crosswalk?

- Yes No

Type?

[Empty box for bike facility type]

7. Lane Configuration:

A. Number of Lanes

2 LANE

B. On street parking?

- Yes No

Location?

- Curbside Loading Floating

C. Parking Clearance from X-walk:

15'

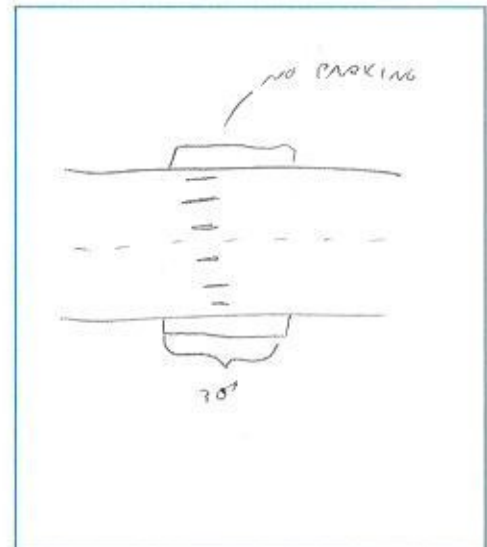
D. Is there a porkchop island?

- Yes No

E. Is there a raised median or pedestrian refuge island?

- Yes No

F. Please describe the cross-section. (Lanes, median, etc.)



Location: _____

Time: _____

Date: _____

Weather: _____

II. Field Data Observations

1. Pavement Markings

- Unmarked crosswalk
- Marked Crosswalk
 - Faded
 - Parallel (or traditional)
 - High-visibility (continental, ladder, or zebra)

Is there a stop bar present at the crossing indicating a location for cars to stop? What is the location relative to the crosswalk?

2. Signage & Signals

Advanced Signage (within 200 ft)

- Warning Series Signage
 - Pedestrian warning series
 - School warning series

At Crosswalk

- Warning Series Signage
 - Pedestrian warning series
 - School warning series → NO ARROWS 51-1 X2 (w/6-7P)

- Bright sides or post reflectors
- In Street Stop for Pedestrian Sign

Number of Signs and Location:

SPOKE TO RESIDENT WHO SAID MORE VISIBILITY NEEDED, HIGH VOLUME @ PRIV-UD/ DROP-OFF,

- Signs on island PEOPLE STAGE ON DELAWARE
- Stop here for pedestrian
- Overhead mounted "local law, stop for ped"
- Signals? Associated Push-Button?
 - Pedestrian Hybrid Beacon
 - Rectangular Rapid Flashing Beacon

Other signage:

3. Infrastructure

- Pedestrian Refuge Island
- Curb extension or bumpout
- Roadside placemaking
- Driveway present
- ADA ramp/ detectable warning
- Sidewalk connection
- Additional traffic calming features

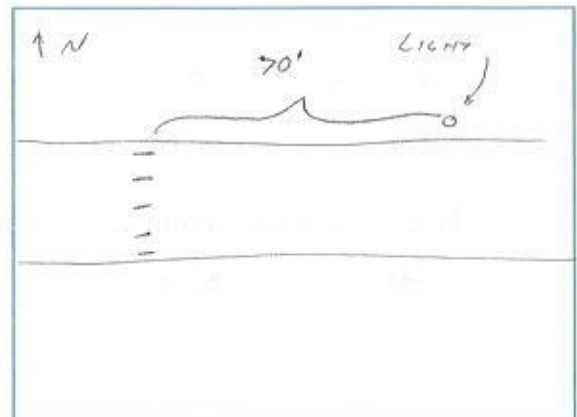
4. Lighting

- At crosswalk (w/in 10 ft)
- Adjacent to crosswalk (10-20 ft)
- No adjacent lighting

Is lighting human-scaled?

- Yes
- No

Draw placement and measure distance from crosswalk.



5. Photos

- Crosswalk
- Signage
- Lighting
- Pavement Markings

Data Collection Form

Please complete the following information about the crossing location.

Location: #15 VESPER/RED OAK

I. Crossing Information

1. Collect aerial of crosswalk using NearMap or GoogleMaps.

2. Crossing Type:

- Controlled Uncontrolled
- Signal Midblock
- Stop Sign At or adjacent to an intersection
- Roundabout

3. Posted Speed Limit: *N LEG*
In what relation to the speed limit people seem to be driving?

25?

- Faster
- Slower
- About the same
- Not sure

4. Is a bus stop adjacent to the crosswalk?

- Yes No
- Sign Post
- Bench
- Shelter

5. Is a school adjacent to the crosswalk?

- Yes No

6. Does a bike facility intersect the crosswalk?

- Yes No

Type?

7. Lane Configuration:

A. Number of Lanes

4 LANE? 2 LANE?

B. On street parking?

- Yes No

Location?

- Curbside Loading Floating

C. Parking Clearance from X-walk:

UNCLEAR, BUT DIDN'T SEE TAGS PARKED CLOSE

D. Is there a porkchop island?

- Yes No

E. Is there a raised median or pedestrian refuge island?

- Yes No

F. Please describe the cross-section. (Lanes, median, etc.)



Location: _____

Time: _____

Date: _____

Weather: _____

II. Field Data Observations

1. Pavement Markings

- Unmarked crosswalk
- Marked Crosswalk
 - Faded
 - Parallel (or traditional)
 - High-visibility (continental, ladder, or zebra)

Is there a stop bar present at the crossing indicating a location for cars to stop? What is the location relative to the crosswalk?

2. Signage & Signals

Advanced Signage (within 200 ft)

- Warning Series Signage
 - Pedestrian warning series
 - School warning series

At Crosswalk

- Warning Series Signage
 - Pedestrian warning series
 - School warning series

- Bright sides or post reflectors
- In Street Stop for Pedestrian Sign

Number of Signs and Location:

- Signs on island → *DIY FLAG MAN*
- Stop here for pedestrian
- Overhead mounted "local law, stop for ped"
- Signals? Associated Push-Button?
 - Pedestrian Hybrid Beacon
 - Rectangular Rapid Flashing Beacon

Other signage:

3. Infrastructure

- Pedestrian Refuge Island
- Curb extension or bumpout
- Roadside placemaking
- Driveway present
- ADA ramp/ detectable warning
- Sidewalk connection
- Additional traffic calming features

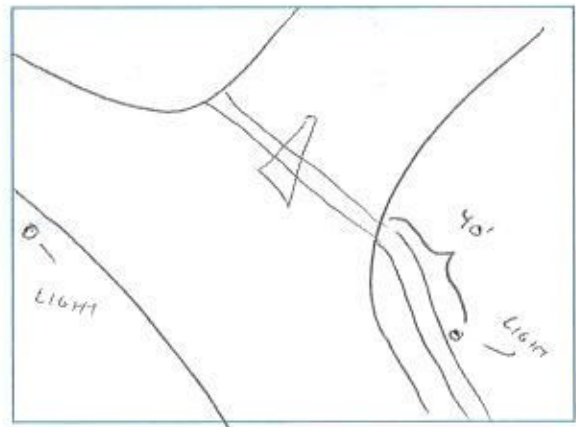
4. Lighting

- At crosswalk (w/in 10 ft)
- Adjacent to crosswalk (10-20 ft)
- No adjacent lighting

Is lighting human-scaled?

- Yes
- No

Draw placement and measure distance from crosswalk.



5. Photos

- Crosswalk
- Signage
- Lighting
- Pavement Markings

Data Collection Form

Please complete the following information about the crossing location.

Location: #16 JEFFERSON 13RD

I. Crossing Information

1. Collect aerial of crosswalk using NearMap or GoogleMaps.

2. Crossing Type:

- Controlled Uncontrolled
- Signal Midblock
- Stop Sign At or adjacent to an intersection
- Roundabout *w/ LEG*

3. Posted Speed Limit: *In what relation to the speed limit people seem to be driving?*

- 25 (ASSUMED)
- Faster
- Slower
- About the same
- Not sure

4. Is a bus stop adjacent to the crosswalk?

- Yes No
- Sign Post
- Bench
- Shelter

5. Is a school adjacent to the crosswalk?

- Yes No
- BACH ELEMENTARY 1 BLOCK WEST*

6. Does a bike facility intersect the crosswalk?

- Yes No

Type?

7. Lane Configuration:

A. Number of Lanes

2-LANE

B. On street parking?

- Yes No

Location?

- Curbside Loading Floating

C. Parking Clearance from X-walk:

25' BOTH SIDES

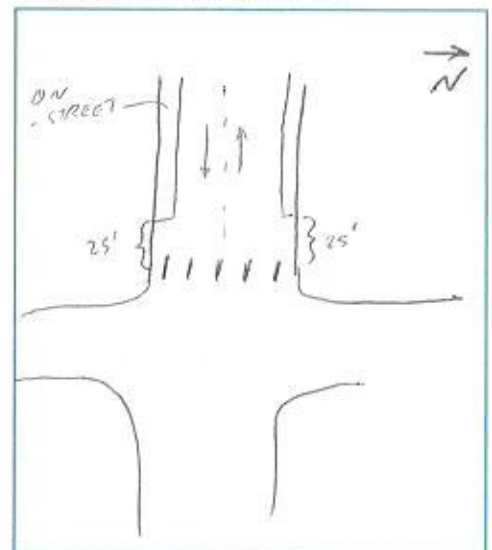
D. Is there a porkchop island?

- Yes No

E. Is there a raised median or pedestrian refuge island?

- Yes No

F. Please describe the cross-section. (Lanes, median, etc.)



Location: _____

Time: _____

Date: _____

Weather: _____

II. Field Data Observations

1. Pavement Markings

- Unmarked crosswalk
- Marked Crosswalk
 - Faded
 - Parallel (or traditional)
 - High-visibility (continental, ladder, or zebra)

Is there a stop bar present at the crossing indicating a location for cars to stop? What is the location relative to the crosswalk?

2. Signage & Signals

Advanced Signage (within 200 ft)

- Warning Series Signage
 - Pedestrian warning series
 - School warning series

At Crosswalk

- Warning Series Signage
 - Pedestrian warning series
 - School warning series

- Bright sides or post reflectors
- In Street Stop for Pedestrian Sign

Number of Signs and Location:

- Signs on island
- Stop here for pedestrian
- Overhead mounted "local law, stop for ped"
- Signals? Associated Push-Button?
 - Pedestrian Hybrid Beacon
 - Rectangular Rapid Flashing Beacon

Other signage:

3. Infrastructure

- Pedestrian Refuge Island
- Curb extension or bumpout
- Roadside placemaking
- Driveway present
- ADA ramp/ detectable warning
- Sidewalk connection
- Additional traffic calming features

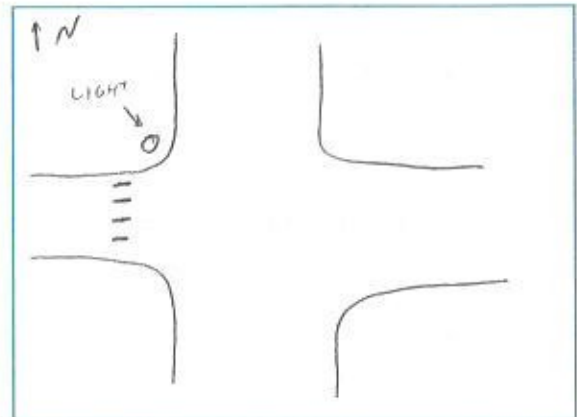
4. Lighting

- At crosswalk (w/in 10 ft)
- Adjacent to crosswalk (10-20 ft)
- No adjacent lighting

Is lighting human-scaled?

- Yes
- No

Draw placement and measure distance from crosswalk.



5. Photos

- Crosswalk
- Signage
- Lighting
- Pavement Markings

Data Collection Form

Please complete the following information about the crossing location.

Location: # 17 SOULE / LUTZ

I. Crossing Information

1. Collect aerial of crosswalk using NearMap or GoogleMaps.

2. Crossing Type:

- Controlled Uncontrolled
- Signal Midblock
 - Stop Sign At or adjacent to an intersection
 - Roundabout *~ LEB*

3. Posted Speed Limit: *In what relation to the speed limit people seem to be driving?*

29 (ASSUMED)

- Faster
- Slower
- About the same
- Not sure

4. Is a bus stop adjacent to the crosswalk?

- Yes No
- Sign Post
 - Bench
 - Shelter

5. Is a school adjacent to the crosswalk?

- Yes No *EBERWHITE ELEM. TO SOUTH*

6. Does a bike facility intersect the crosswalk?

- Yes No

Type?

7. Lane Configuration:

A. Number of Lanes

4 (SEE BELOW)

B. On street parking?

- Yes No

Location?

- Curbside Loading Floating

C. Parking Clearance from X-walk:

10'

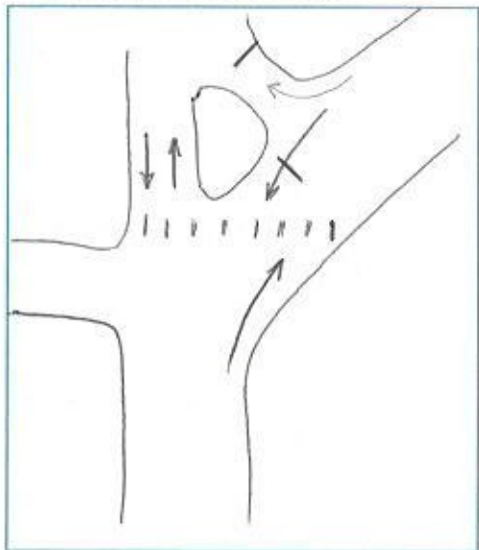
D. Is there a porkchop island?

- Yes No

E. Is there a raised median or pedestrian refuge island?

- Yes No

F. Please describe the cross-section. (Lanes, median, etc.)



Location: _____

Time: _____

Date: _____

Weather: _____

II. Field Data Observations

1. Pavement Markings

- Unmarked crosswalk
- Marked Crosswalk
 - Faded
 - Parallel (or traditional)
 - High-visibility (continental, ladder, or zebra)

Is there a stop bar present at the crossing indicating a location for cars to stop? What is the location relative to the crosswalk?

2. Signage & Signals

Advanced Signage (within 200 ft)

- Warning Series Signage
 - Pedestrian warning series
 - School warning series

At Crosswalk

- Warning Series Signage
 - Pedestrian warning series
 - School warning series
- Bright sides or post reflectors
- In Street Stop for Pedestrian Sign

Number of Signs and Location:

- Signs on island
- Stop here for pedestrian
- Overhead mounted "local law, stop for ped"
- Signals? Associated Push-Button?
 - Pedestrian Hybrid Beacon
 - Rectangular Rapid Flashing Beacon
- Other signage:

3. Infrastructure

- Pedestrian Refuge Island
- Curb extension or bumpout
- Roadside placemaking
- Driveway present
- ADA ramp/ detectable warning
- Sidewalk connection
- Additional traffic calming features

4. Lighting

- At crosswalk (w/in 10 ft)
- Adjacent to crosswalk (10-20 ft)
- No adjacent lighting

Is lighting human-scaled?

- Yes
- No

Draw placement and measure distance from crosswalk.



5. Photos

- Crosswalk
- Signage
- Lighting
- Pavement Markings

Data Collection Form

Please complete the following information about the crossing location.

Location: #18 VICTORS WAY & BOARDWALK DRIVE

I. Crossing Information

1. Collect aerial of crosswalk using NearMap or GoogleMaps.

2. Crossing Type:

- Controlled Uncontrolled
- Signal Midblock
- Stop Sign At or adjacent to an intersection
- Roundabout

3. Posted Speed Limit:

25

W LEG
In what relation to the speed limit people seem to be driving?

- Faster
- Slower
- About the same
- Not sure

4. Is a bus stop adjacent to the crosswalk?

- Yes No
- Sign Post
- Bench
- Shelter

5. Is a school adjacent to the crosswalk?

- Yes No

6. Does a bike facility intersect the crosswalk?

- Yes No
- Type?

7. Lane Configuration:

A. Number of Lanes

2-LANE

B. On street parking?

- Yes No

Location?

- Curbside Loading Floating

C. Parking Clearance from X-walk:

D. Is there a porkchop island?

- Yes No

E. Is there a raised median or pedestrian refuge island?

- Yes No

F. Please describe the cross-section. (Lanes, median, etc.)

STREET WAS BEING RESURFACED DURING FIELD VISIT, LANEAGE / X-WALK TYPE / BIKE LANES UNKNOWN

Location: _____

Time: _____

Date: _____

Weather: _____

II. Field Data Observations

1. Pavement Markings

- Unmarked crosswalk
- Marked Crosswalk
 - Faded
 - Parallel (or traditional)
 - High-visibility (continental, ladder, or zebra)

Is there a stop bar present at the crossing indicating a location for cars to stop? What is the location relative to the crosswalk?

2. Signage & Signals

Advanced Signage (within 200 ft)

- Warning Series Signage
 - Pedestrian warning series
 - School warning series

At Crosswalk

- Warning Series Signage
 - Pedestrian warning series
 - School warning series
- Bright sides or post reflectors
- In Street Stop for Pedestrian Sign

Number of Signs and Location:

- Signs on island
- Stop here for pedestrian
- Overhead mounted "local law, stop for ped"
- Signals? Associated Push-Button?
 - Pedestrian Hybrid Beacon
 - Rectangular Rapid Flashing Beacon

Other signage:

3. Infrastructure

- Pedestrian Refuge Island
- Curb extension or bumpout
- Roadside placemaking
- Driveway present
- ADA ramp/ detectable warning
- Sidewalk connection
- Additional traffic calming features

4. Lighting

- At crosswalk (w/in 10 ft)
- Adjacent to crosswalk (10-20 ft)
- No adjacent lighting

Is lighting human-scaled?

- Yes
- No

Draw placement and measure distance from crosswalk.

5. Photos

- Crosswalk
- Signage
- Lighting
- Pavement Markings

Data Collection Form

Please complete the following information about the crossing location.

Location: #19 MAPLE RD @ ~~PLYMOUTH~~ & HAISLET

I. Crossing Information

1. Collect aerial of crosswalk using NearMap or GoogleMaps.

2. Crossing Type:

- Controlled Uncontrolled
- Signal Midblock
- Stop Sign At or adjacent to an intersection
- Roundabout

3. Posted Speed Limit:

35

NB VARIABLE
SL SIGN? TURNED
OFF WHILE IN FIELD

N LEG
In what relation to the speed limit people seem to be driving?

- Faster
- Slower
- About the same
- Not sure

4. Is a bus stop adjacent to the crosswalk?

- Yes No
- Sign Post NW: SIGN + BENCH
- Bench NE: SIGN
- Shelter

5. Is a school adjacent to the crosswalk?

- Yes No

6. Does a bike facility intersect the crosswalk?

- Yes No

Type?

BUFFERED, DEDICATED BIKE LANES

7. Lane Configuration:

A. Number of Lanes

3-LANE (TWLTL)

B. On street parking?

- Yes No

Location?

- Curbside Loading Floating

C. Parking Clearance from X-walk:

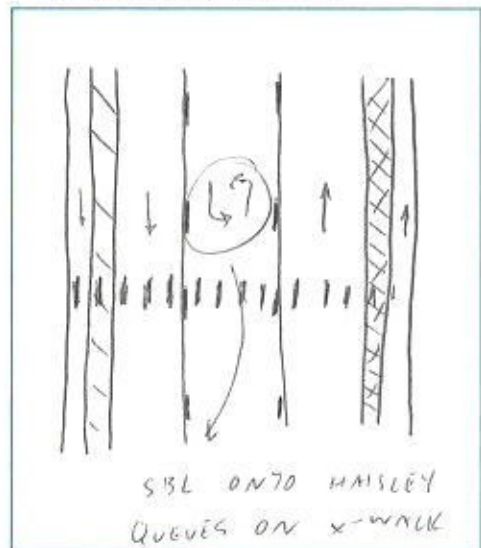
D. Is there a porkchop island?

- Yes No

E. Is there a raised median or pedestrian refuge island?

- Yes No

F. Please describe the cross-section. (Lanes, median, etc.)



Location: _____

Time: _____

Date: _____

Weather: _____

II. Field Data Observations

1. Pavement Markings

- Unmarked crosswalk
- Marked Crosswalk
 - Faded
 - Parallel (or traditional)
 - High-visibility (continental, ladder, or zebra)

Is there a stop bar present at the crossing indicating a location for cars to stop? What is the location relative to the crosswalk?

2. Signage & Signals

Advanced Signage (within 200 ft)

- Warning Series Signage
 - Pedestrian warning series *NONE*
 - School warning series

At Crosswalk

- Warning Series Signage
 - Pedestrian warning series
 - School warning series
- Bright sides or post reflectors
- In Street Stop for Pedestrian Sign

Number of Signs and Location:

- Signs on island
- Stop here for pedestrian
- Overhead mounted "local law, stop for ped"

- Signals? Associated Push-Button?
 - Pedestrian Hybrid Beacon
 - Rectangular Rapid Flashing Beacon

Other signage:

↓

AUDIBLE "YELLOW LIGHT FLASHING"

3. Infrastructure

- Pedestrian Refuge Island
- Curb extension or bumpout
- Roadside placemaking
- Driveway present
- ADA ramp/ detectable warning
- Sidewalk connection
- Additional traffic calming features

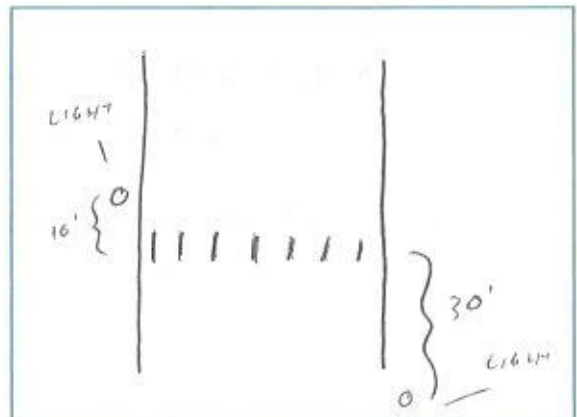
4. Lighting

- At crosswalk (w/in 10 ft)
- Adjacent to crosswalk (10-20 ft)
- No adjacent lighting

Is lighting human-scaled?

- Yes
- No

Draw placement and measure distance from crosswalk.



5. Photos

- Crosswalk
- Signage
- Lighting
- Pavement Markings

Data Collection Form

Please complete the following information about the crossing location.

Location: #20 NIXON RD N/O PLYMOUTH

I. Crossing Information

1. Collect aerial of crosswalk using NearMap or GoogleMaps.

2. Crossing Type:

- Controlled Uncontrolled
- Signal Midblock
- Stop Sign At or adjacent to an intersection
- Roundabout

3. Posted Speed Limit: *In what relation to the speed limit people seem to be driving?*

30

- Faster
- Slower
- About the same
- Not sure

4. Is a bus stop adjacent to the crosswalk?

- Yes No
- Sign Post
- Bench NB/SB
- Shelter

5. Is a school adjacent to the crosswalk?

- Yes No

6. Does a bike facility intersect the crosswalk?

- Yes No

Type?

DEDICATED, UNPROTECTED, NB/SB

7. Lane Configuration:

A. Number of Lanes

3-LANE (TWLTL)

B. On street parking?

- Yes No

Location?

- Curbside Loading Floating

C. Parking Clearance from X-walk:

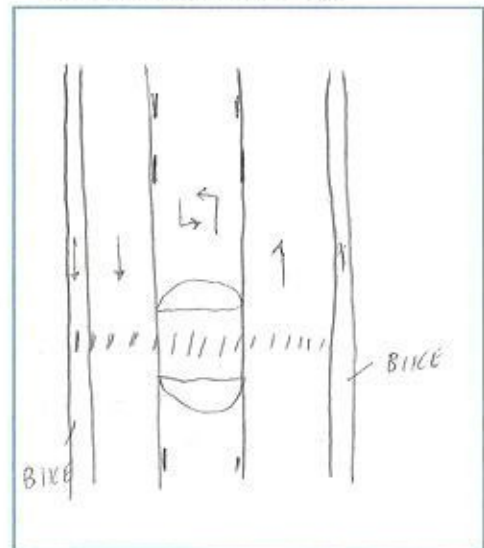
D. Is there a porkchop island?

- Yes No

E. Is there a raised median or pedestrian refuge island?

- Yes No

F. Please describe the cross-section. (Lanes, median, etc.)



Location: _____

Time: _____

Date: _____

Weather: _____

II. Field Data Observations

1. Pavement Markings

- Unmarked crosswalk
- Marked Crosswalk
 - Faded
 - Parallel (or traditional) *W/PAVERS*
 - High-visibility (continental, ladder, or zebra)

Is there a stop bar present at the crossing indicating a location for cars to stop? What is the location relative to the crosswalk?

2. Signage & Signals

Advanced Signage (within 200 ft)

- Warning Series Signage
 - Pedestrian warning series
 - School warning series

At Crosswalk

- Warning Series Signage
 - Pedestrian warning series
 - School warning series
- Bright sides or post reflectors
- In Street Stop for Pedestrian Sign

Number of Signs and Location:

2 → MEDIAN

- Signs on island
- Stop here for pedestrian
- Overhead mounted "local law, stop for ped"
- Signals? Associated Push-Button?
 - Pedestrian Hybrid Beacon
 - Rectangular Rapid Flashing Beacon

Other signage:

3. Infrastructure

- Pedestrian Refuge Island
- Curb extension or bumpout
- Roadside placemaking
- Driveway present
- ADA ramp/ detectable warning
- Sidewalk connection
- Additional traffic calming features

PAVERS & RUMBLE STRIPS

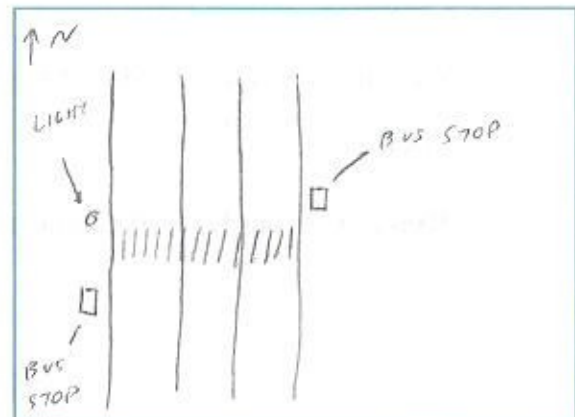
4. Lighting

- At crosswalk (w/in 10 ft)
- Adjacent to crosswalk (10-20 ft)
- No adjacent lighting

Is lighting human-scaled?

- Yes
- No

Draw placement and measure distance from crosswalk.



5. Photos

- Crosswalk
- Signage
- Lighting
- Pavement Markings

Data Collection Form

Please complete the following information about the crossing location.

Location: #21 STATE ST & ELLSWORTH

I. Crossing Information

1. Collect aerial of crosswalk using NearMap or GoogleMaps.

2. Crossing Type:

- Controlled
 - Signal
 - Stop Sign
 - Roundabout
 - Uncontrolled
 - Midblock
 - At or adjacent to an intersection
- ~ LEB*

3. Posted Speed Limit: *In what relation to the speed limit people seem to be driving?*

35

- Faster
 - Slower
 - About the same
 - Not sure
- FASTER NB*
SLOWER SB (APPROACHING CURVE)

4. Is a bus stop adjacent to the crosswalk?

- Yes
 - No
- Sign Post
 - Bench
 - Shelter

5. Is a school adjacent to the crosswalk?

- Yes
- No

6. Does a bike facility intersect the crosswalk?

- Yes
- No

Type?

7. Lane Configuration:

A. Number of Lanes

5 - LANES

B. On street parking?

- Yes
- No

Location?

- Curbside
- Loading
- Floating

C. Parking Clearance from X-walk:

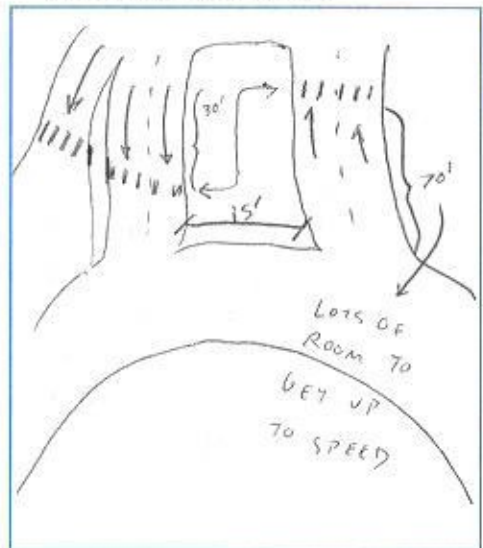
D. Is there a porkchop island?

- Yes
- No

E. Is there a raised median or pedestrian refuge island?

- Yes
- No

F. Please describe the cross-section. (Lanes, median, etc.)



Location: _____

Time: _____

Date: _____

Weather: _____

II. Field Data Observations

1. Pavement Markings

- Unmarked crosswalk
- Marked Crosswalk
 - Faded
 - Parallel (or traditional)
 - High-visibility (continental, ladder, or zebra)

Is there a stop bar present at the crossing indicating a location for cars to stop? What is the location relative to the crosswalk?

2. Signage & Signals

Advanced Signage (within 200 ft)

- Warning Series Signage
 - Pedestrian warning series
 - School warning series
- NONE OTHER THAN "YIELD AHEAD" SIGN*

At Crosswalk

- Warning Series Signage
 - Pedestrian warning series
 - School warning series
- Bright sides or post reflectors
- In Street Stop for Pedestrian Sign

Number of Signs and Location:

- Signs on island
- Stop here for pedestrian x 3
- Overhead mounted "local law, stop for ped"
- Signals? Associated Push-Button?
 - Pedestrian Hybrid Beacon
 - Rectangular Rapid Flashing Beacon
- Other signage:

3. Infrastructure

- Pedestrian Refuge Island
- Curb extension or bumpout
- Roadside placemaking
- Driveway present
- ADA ramp/ detectable warning
- Sidewalk connection
- Additional traffic calming features

RUMBLE STRIPS ~ 10' UPSTREAM OF X-WALK

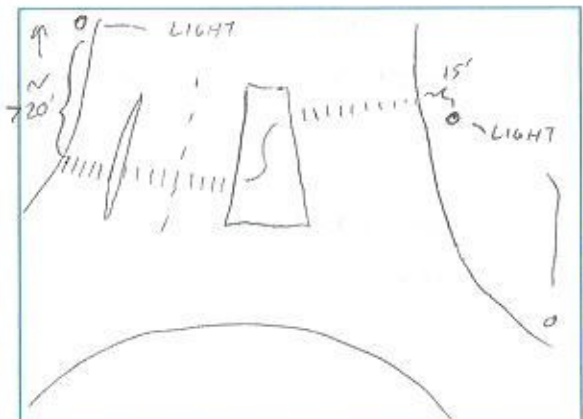
4. Lighting

- At crosswalk (w/in 10 ft)
- Adjacent to crosswalk (10-20 ft)
- No adjacent lighting

Is lighting human-scaled?

- Yes
- No

Draw placement and measure distance from crosswalk.



5. Photos

- Crosswalk
- Signage
- Lighting
- Pavement Markings

Data Collection Form

Please complete the following information about the crossing location.

Location: # 22 BEDDES RD & EARHART RD

I. Crossing Information

1. Collect aerial of crosswalk using NearMap or GoogleMaps.

2. Crossing Type:

- Controlled Uncontrolled
- Signal
 - Stop Sign
 - Roundabout
 - Midblock
 - At or adjacent to an intersection

3. Posted Speed Limit:

20

In what relation to the speed limit people seem to be driving?

- Faster
 Slower
 About the same
 Not sure

4. Is a bus stop adjacent to the crosswalk?

- Yes No
- Sign Post
 - Bench
 - Shelter

5. Is a school adjacent to the crosswalk?

- Yes No
- CONCORDIA UNIVERSITY

6. Does a bike facility intersect the crosswalk?

- Yes No

Type?

7. Lane Configuration:

A. Number of Lanes

3-LANES

B. On street parking?

- Yes No

Location?

- Curbside Loading Floating

C. Parking Clearance from X-walk:

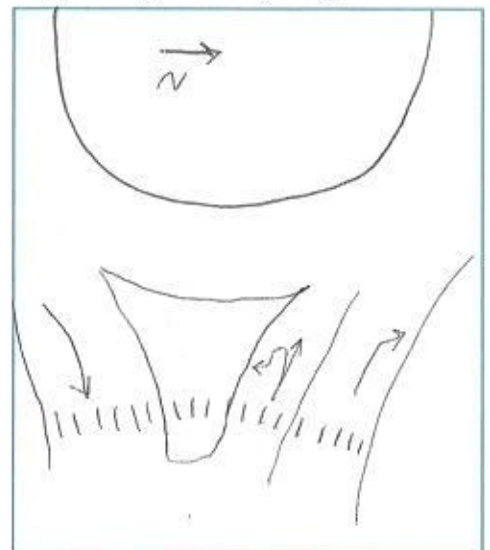
D. Is there a porkchop island?

- Yes No

E. Is there a raised median or pedestrian refuge island?

- Yes No

F. Please describe the cross-section. (Lanes, median, etc.)



Location: _____

Time: _____

Date: _____

Weather: _____

II. Field Data Observations

1. Pavement Markings

- Unmarked crosswalk
- Marked Crosswalk
 - Faded
 - Parallel (or traditional)
 - High-visibility (continental, ladder, or zebra)

Is there a stop bar present at the crossing indicating a location for cars to stop? What is the location relative to the crosswalk?

YES → 25' UPSTREAM OF WB APPROACH

2. Signage & Signals

Advanced Signage (within 200 ft)

- Warning Series Signage
 - Pedestrian warning series
 - School warning series

At Crosswalk

- Warning Series Signage ← NONE
 - Pedestrian warning series
 - School warning series

- Bright sides or post reflectors
- In Street Stop for Pedestrian Sign

Number of Signs and Location:

1 MIDDLE OF LANE WB APPROACH
2 IN MEDIAN (1 EACH DIRECTION)

- Signs on island
- Stop here for pedestrian → WB APPROACH
- Overhead mounted "local law, stop for ped"
- Signals? Associated Push-Button?
 - Pedestrian Hybrid Beacon
 - Rectangular Rapid Flashing Beacon
- Other signage:

3. Infrastructure

- Pedestrian Refuge Island
- Curb extension or bumpout
- Roadside placemaking
- Driveway present
- ADA ramp/ detectable warning
- Sidewalk connection
- Additional traffic calming features

RUMBLE STRIPS BOTH EB/WB
~ 10' UPSTREAM OF X-WALKS

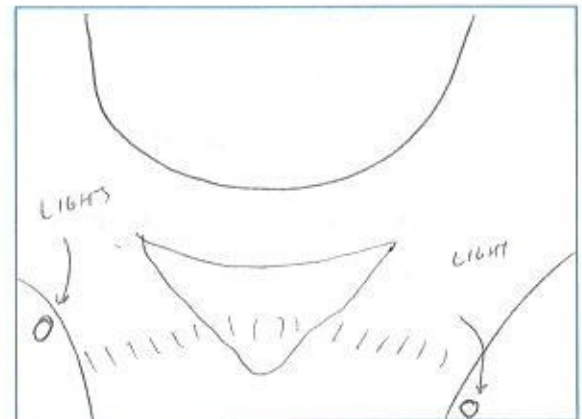
4. Lighting

- At crosswalk (w/in 10 ft)
- Adjacent to crosswalk (10-20 ft)
- No adjacent lighting

Is lighting human-scaled?

- Yes
- No

Draw placement and measure distance from crosswalk.



5. Photos

- Crosswalk
- Signage
- Lighting
- Pavement Markings

Data Collection Form

Please complete the following information about the crossing location.

Location: #23 PITTSFIELD & JEANNE

I. Crossing Information

1. Collect aerial of crosswalk using NearMap or GoogleMaps.

2. Crossing Type:

- Controlled
 - Signal
 - Stop Sign
 - Roundabout
- Uncontrolled
 - Midblock
 - At or adjacent to an intersection

3. Posted Speed Limit: *In what relation to the speed limit people seem to be driving?*

25

- Faster
- Slower
- About the same
- Not sure

4. Is a bus stop adjacent to the crosswalk?

- Yes
 - No
- Sign Post
 - Bench
 - Shelter

5. Is a school adjacent to the crosswalk?

- Yes
 - No
- 2 BLOCKS
PITTSFIELD ELEMENTARY SOUTH

6. Does a bike facility intersect the crosswalk?

- Yes
- No

Type?

7. Lane Configuration:

A. Number of Lanes

2 LANE

B. On street parking?

- Yes
- No

Location?

- Curbside
- Loading
- Floating

C. Parking Clearance from X-walk:

50'

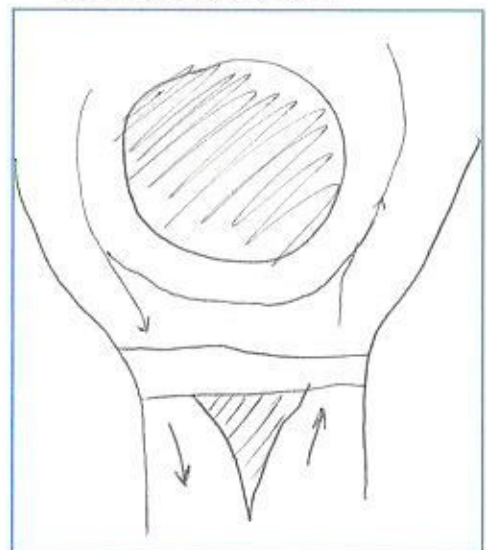
D. Is there a porkchop island?

- Yes
 - No
- ONLY PAINT

E. Is there a raised median or pedestrian refuge island?

- Yes
 - No
- JUST PAINT

F. Please describe the cross-section. (Lanes, median, etc.)



Location: _____

Time: _____

Date: _____

Weather: _____

II. Field Data Observations

1. Pavement Markings

- Unmarked crosswalk
- Marked Crosswalk
 - Faded
 - Parallel (or traditional)
 - High-visibility (continental, ladder, or zebra)

Is there a stop bar present at the crossing indicating a location for cars to stop? What is the location relative to the crosswalk?

2. Signage & Signals

Advanced Signage (within 200 ft)

- Warning Series Signage
 - Pedestrian warning series
 - School warning series *NONE*

At Crosswalk

- Warning Series Signage
 - Pedestrian warning series *NONE*
 - School warning series

- Bright sides or post reflectors
- In Street Stop for Pedestrian Sign

Number of Signs and Location:

- Signs on island
- Stop here for pedestrian *NONE*
- Overhead mounted "local law, stop for ped"
- Signals? Associated Push-Button?
 - Pedestrian Hybrid Beacon
 - Rectangular Rapid Flashing Beacon

Other signage:

3. Infrastructure

- Kind of
- Pedestrian Refuge Island
 - Curb extension or bumpout
 - Roadside placemaking
 - Driveway present
 - ADA ramp/ detectable warning
 - Sidewalk connection
 - Additional traffic calming features

VARIABLE SPEED LIMIT SIGN
NEAR SCHOOL NB

4. Lighting

- At crosswalk (w/in 10 ft)
- Adjacent to crosswalk (10-20 ft)
- No adjacent lighting

Is lighting human-scaled?

- Yes
- No

Draw placement and measure distance from crosswalk.

5. Photos

- Crosswalk
- Signage
- Lighting
- Pavement Markings