

S. INDUSTRIAL HWY

S18°23'30"E

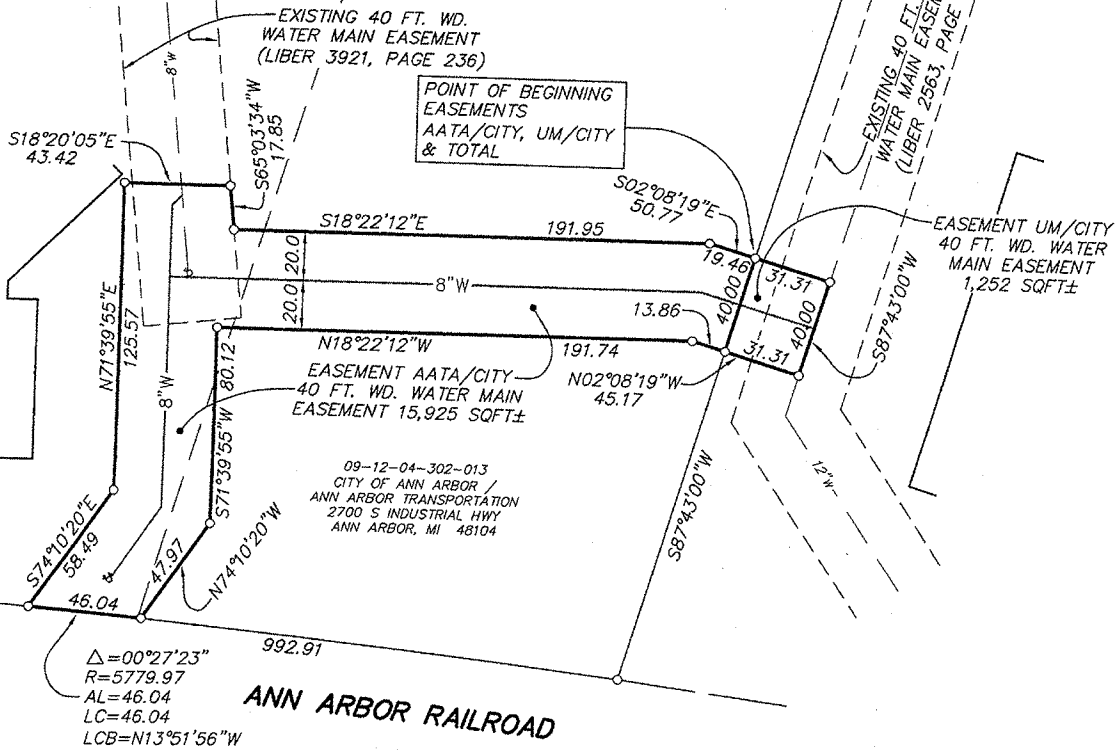
SE CORNER
LOT 21
deKONING
SUBDIVISION

deKONING SUBDIVISION
(LIBER 21 OF PLATS, PAGES 63-69)

09-12-04-302-014
2850 S INDUSTRIAL HWY
UNIVERSITY OF MICHIGAN
3003 S. STATE ST
ANN ARBOR, MI 48109

20

21



$\Delta=00^{\circ}27'23''$
R=5779.97
AL=46.04
LC=46.04
LCB=N13°51'56"W

ANN ARBOR RAILROAD

$\Delta=09^{\circ}50'33''$
R=5779.97
AL=992.91
LC=991.69
LCB=N16°38'06"W

LEGEND

- 8"W — = PROPOSED WATER MAIN
- 8"W - = EXISTING WATER MAIN

SCALE: 1 INCH = 60 FEET

LEGEND F = FOUND IRON MARKER
S = SET IRON MARKER

Thomas L. Sutherland
PROFESSIONAL SURVEYOR NO. 24620



WASHTENAW ENGINEERING COMPANY
CIVIL ENGINEERS * PLANNERS
SURVEYORS * LANDSCAPE ARCHITECTS
3526 W. LIBERTY RD, SUITE 400
ANN ARBOR, MICHIGAN 48103
TEL. 734-761-8800 FAX. 734-761-9530
weco@wengco.com
www.washtenawengineering.com

CLIENT: CITY OF ANN ARBOR	
SECTION <u>4</u>	
TOWN <u>3</u> SOUTH	RANGE <u>6</u> EAST
CITY OF ANN ARBOR	
WASHTENAW COUNTY * MICHIGAN	
DATE <u>11-15-12</u>	REV. <u>12-20-12, 2-4-13</u> <u>6-27-13</u>
DRAWN <u>DJH</u>	JOB <u>31511</u>
CHECK <u>TLS</u>	F.B. <u>648</u>
SHEET <u>1 OF 2</u>	FILE NO. <u>R-9966</u>



H:\MapXpress\31511\wengco\31511\wengco\MET\ESBMS.dwg - dwg - 6/27/2013 8:20:08 AM