

CURVE #2:  
 $\Delta = 075^{\circ}32'$   
 $L = 13.18'$   
 $R = 2916.93'$   
 $CH = 13.18'$   
 $CH BR = N 71^{\circ}40'47'' W$

N 18 $^{\circ}27'10''$  E, 4.00'  
 POINT OF BEGINNING

KIPKE DR  
 S 18 $^{\circ}27'10''$  W, 184.24'

CURVE #1:  
 $\Delta = 075^{\circ}30'$   
 $L = 13.18'$   
 $R = 2920.93'$   
 $CH = 13.18'$   
 $CH BR = S 71^{\circ}40'46'' E$

CENTER COR MON  
 SECT 32

UNIVERSITY OF MICHIGAN GOLF COURSE  
 #500 E. STADIUM BLVD  
 09-09-32-400-002

E STADIUM BLVD  
 (92' R.O.W.)

UNIVERSITY OF MICHIGAN SC-7 PARKING LOT  
 #500 E. STADIUM BLVD  
 09-09-32-401-001

E. STADIUM BLVD SURVEY

S 87 $^{\circ}29'59''$  W, 1147.21'

ANN ARBOR RAILROAD  
 (59.5' R.O.W.)

LEGEND

	SECTION LINE
	OLD ROW
	PERMANENT ROW/EASEMENT
	PROPOSED ROW (HATCHING)

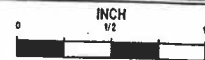
E. X COR  
 SECT 32

**NCI** NORTHWEST CONSULTANTS, INC.

PROJECT MANAGEMENT - PUBLIC SERVICES - CITY OF ANN ARBOR

**E. STADIUM BLVD  
 BRIDGES REPLACEMENT PROJECT**  
 PROPOSED ROAD ROW - EXHIBIT 1  
 500 E. STADIUM BLVD  
 09-09-32-401-001

SCALE  
 HORIZ. 1"=100'

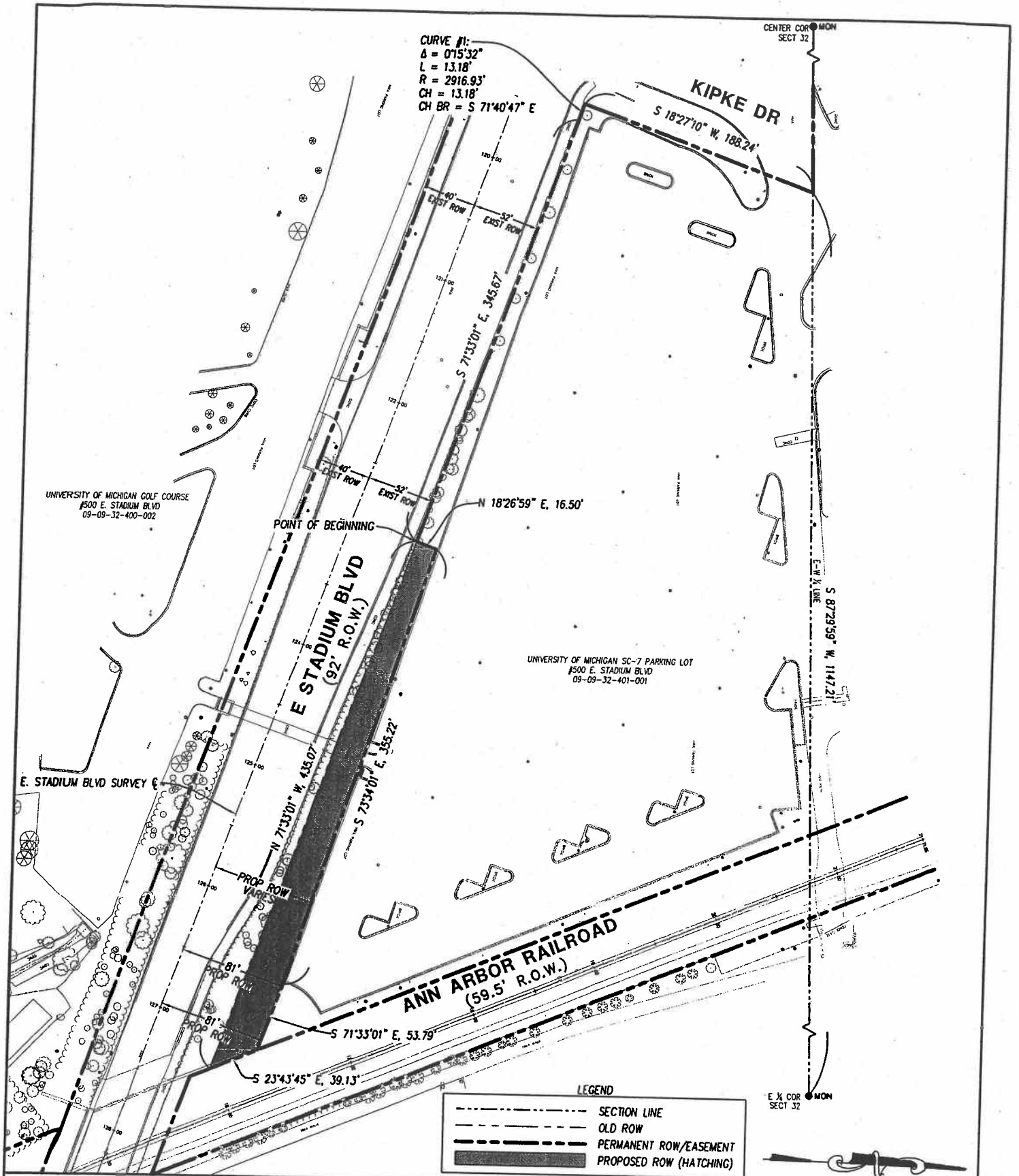


DRAWING NO.  
 2006-045-EXHIBIT 1

SHEET NO.

1 OF 1

REV. NO.	DESCRIPTION	DATE	DR. BY	CH. BY
	REVISED FOR EXTENDED WALL	03/07/11	AK	RL
	ORIGINAL ISSUE	07/23/10	AK	RL



**NCI** NORTHWEST CONSULTANTS, INC.

PROJECT MANAGEMENT - PUBLIC SERVICES - CITY OF ANN ARBOR

**E. STADIUM BLVD  
 BRIDGES REPLACEMENT PROJECT**  
 PROPOSED ROAD ROW - EXHIBIT 2  
 500 E. STADIUM BLVD  
 09-09-32-401-001

SCALE  
 HORIZ. 1"=100'

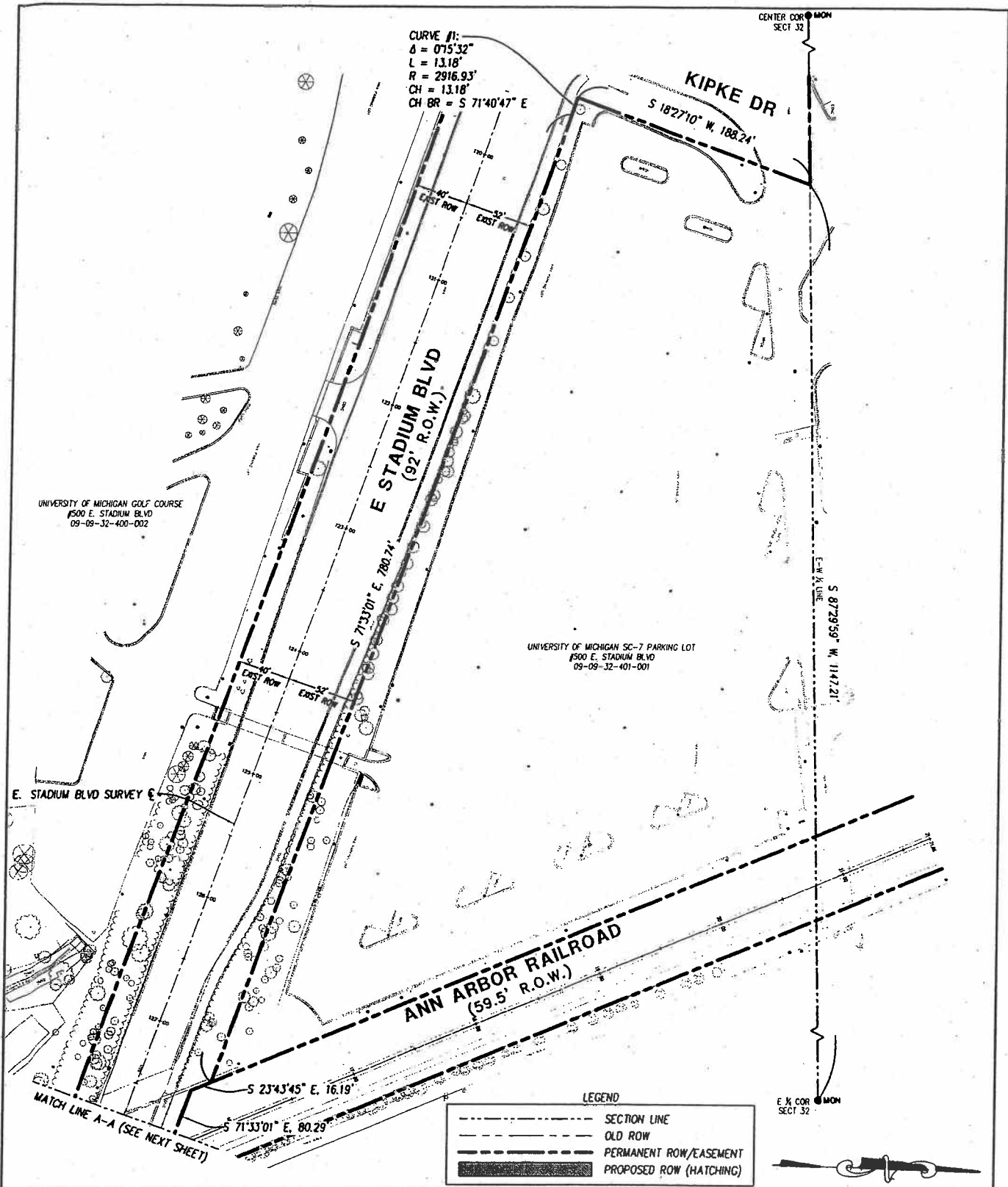


DRAWING NO.  
**2006-045-EXHIBIT 2**

SHEET NO.

1 OF 1

REV. NO.	DESCRIPTION	DATE	DR.BY	CH.BY
	REVISED FOR EXTENDED WALL	03/07/11	AK	RL
	REVISED PER UM COMMENTS	12/22/10	AK	RL
	ORIGINAL ISSUE	7/23/10	AK	RL



**NCI** NORTHWEST CONSULTANTS, INC.

PROJECT MANAGEMENT - PUBLIC SERVICES - CITY OF ANN ARBOR

**E. STADIUM BLVD  
 BRIDGES REPLACEMENT PROJECT  
 PROPOSED ROAD ROW - EXHIBIT 3  
 500 E. STADIUM BLVD  
 09-09-32-401-001**

REV. NO.	DESCRIPTION	DATE	DR. BY	CH. BY
	ORIGINAL ISSUE	07/23/10	AK	RL

SCALE HORIZ. 1"=100'	INCH 1/2" = 1'
DRAWING NO. 2006-045-EXHIBIT 3	
SHEET NO. 1 OF 2	

UNIVERSITY OF MICHIGAN GOLF COURSE  
#500 E. STADIUM BLVD  
09-09-32-400-002

UNIVERSITY OF MICHIGAN FIELD HOCKEY  
#500 E. STADIUM BLVD  
09-09-32-401-001

UNIVERSITY OF MICHIGAN RED LOT  
#500 E. STADIUM BLVD  
09-09-32-400-002

S. STATE ST.  
(66' R.O.W.)

E SECTION LINE OF 32  
(AS OCCUPIED)  
W SECTION LINE OF 33  
(AS OCCUPIED)

MATCH LINE A-A (SEE PREVIOUS SHEET)  
S 71°33'01" E, 80.29'

N 23°43'45" W, 24.29'

POINT OF BEGINNING

ANN ARBOR RAILROAD  
(59.5' R.O.W.)

E STADIUM BLVD  
(80' R.O.W.)

PRIP 33' ROW

N 88°39'11" E, 40.99'

S 01°22'54" E, 33.89'

LEGEND

	SECTION LINE
	OLD ROW
	PERMANENT ROW/EASEMENT
	PROPOSED ROW (HATCHING)

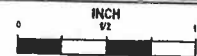


**NCI** NORTHWEST CONSULTANTS, INC.

PROJECT MANAGEMENT - PUBLIC SERVICES - CITY OF ANN ARBOR

**E. STADIUM BLVD  
BRIDGES REPLACEMENT PROJECT**  
PROPOSED ROAD ROW - EXHIBIT 3  
500 E. STADIUM BLVD  
09-09-32-401-001

SCALE  
HORIZ. 1"=100'

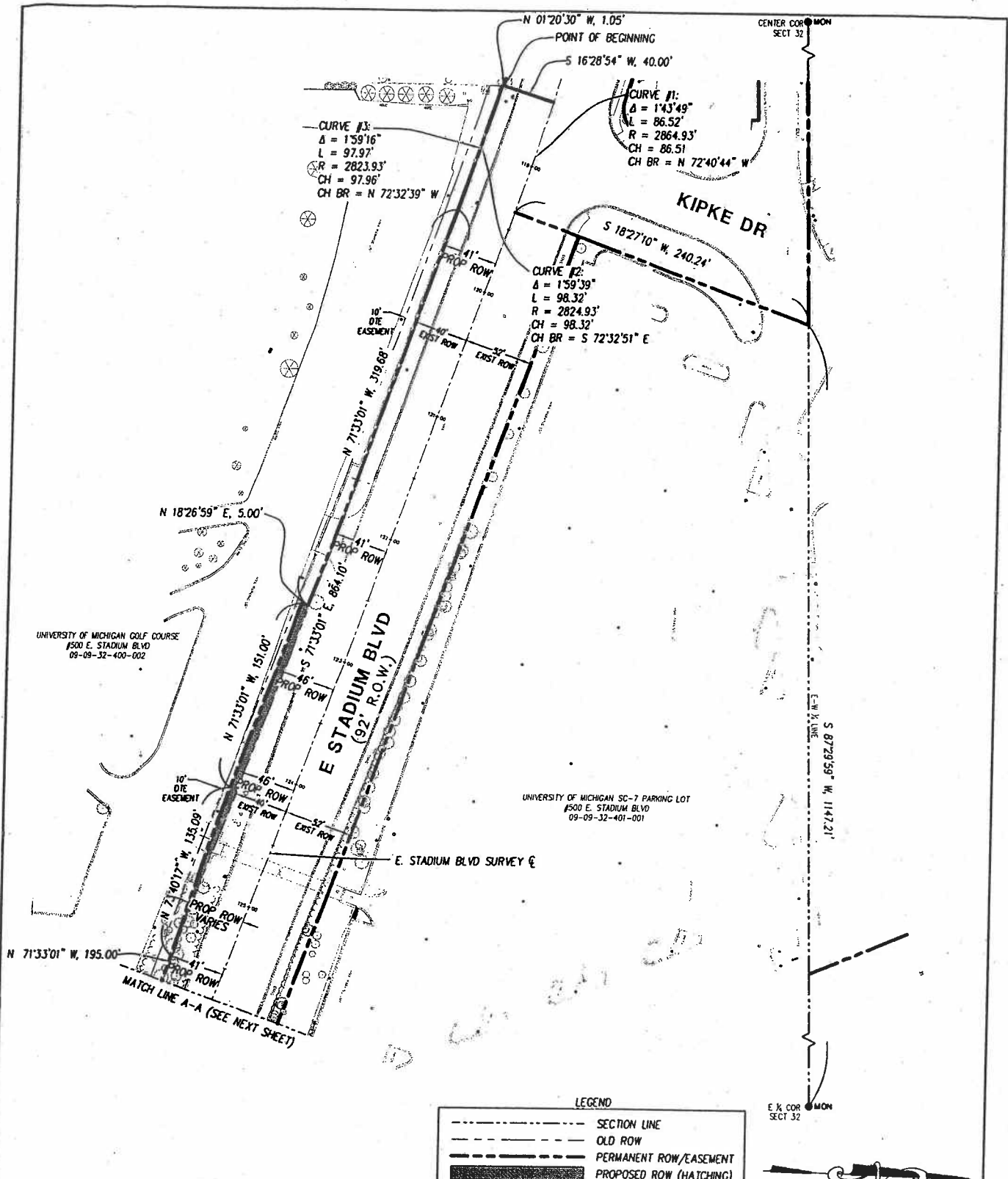


DRAWING NO.  
2006-045-EXHIBIT 3

SHEET NO.

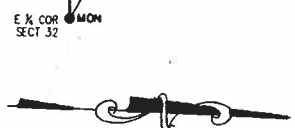
2 OF 2

REV. NO.	DESCRIPTION	DATE	DR. BY	CH. BY
	ORIGINAL ISSUE	07/23/10	AK	RL



**LEGEND**

	SECTION LINE
	OLD ROW
	PERMANENT ROW/EASEMENT
	PROPOSED ROW (HATCHING)



**NCI** NORTHWEST CONSULTANTS, INC.

PROJECT MANAGEMENT - PUBLIC SERVICES - CITY OF ANN ARBOR

**E. STADIUM BLVD  
 BRIDGES REPLACEMENT PROJECT  
 PROPOSED ROAD ROW - EXHIBIT 4  
 500 E. STADIUM BLVD  
 09-09-32-400-002**

SCALE HORIZ. 1"=100'	
DRAWING NO. <b>2006-045-EXHIBIT 4</b>	
SHEET NO. <b>1 OF 2</b>	

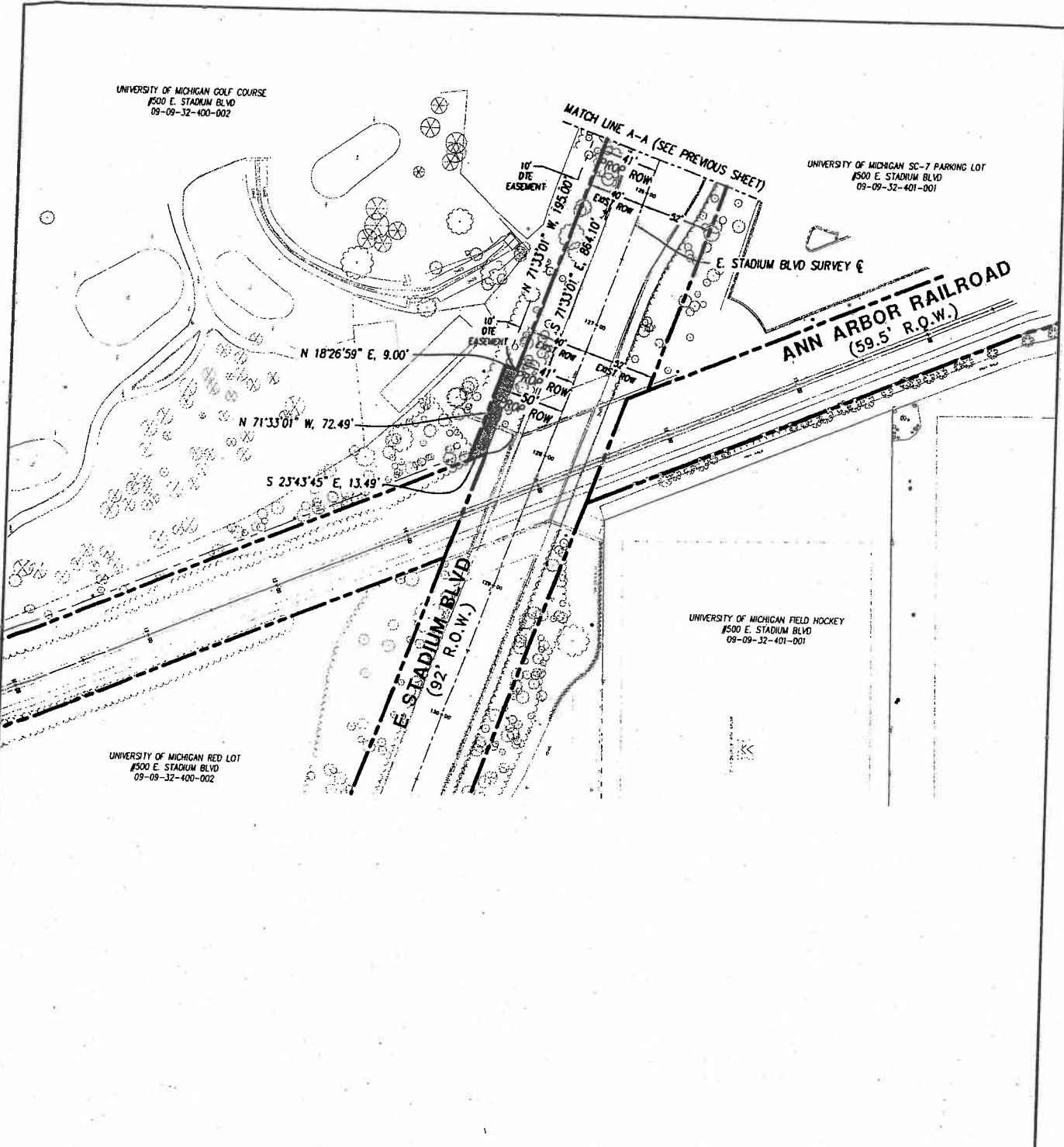
REV. NO.	DESCRIPTION	DATE	DR. BY	CH. BY

UNIVERSITY OF MICHIGAN GOLF COURSE  
#500 E. STADIUM BLVD  
09-09-32-400-002

UNIVERSITY OF MICHIGAN SC-7 PARKING LOT  
#500 E. STADIUM BLVD  
09-09-32-401-001

UNIVERSITY OF MICHIGAN FIELD HOCKEY  
#500 E. STADIUM BLVD  
09-09-32-401-001

UNIVERSITY OF MICHIGAN RED LOT  
#500 E. STADIUM BLVD  
09-09-32-400-002



LEGEND

	SECTION LINE
	OLD ROW
	PERMANENT ROW/EASEMENT
	PROPOSED ROW (HATCHING)

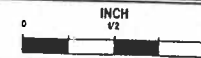


**NCI** NORTHWEST CONSULTANTS, INC.

PROJECT MANAGEMENT - PUBLIC SERVICES - CITY OF ANN ARBOR

**E. STADIUM BLVD  
BRIDGES REPLACEMENT PROJECT  
PROPOSED ROAD ROW - EXHIBIT 4  
500 E. STADIUM BLVD  
09-09-32-400-002**

SCALE  
HORIZ. 1"=100'



DRAWING NO.  
**2006-045-EXHIBIT 4**

SHEET NO. **2 OF 2**

REV. NO.	DESCRIPTION	DATE	DR. BY	CH. BY
	ORIGINAL ISSUE	07/23/10	AK	RL

CURVE #1:  
 $\Delta = 075^{\circ}49'$   
 $L = 13.18'$   
 $R = 2864.93'$   
 $CH = 13.18'$   
 $CH BR = S 71^{\circ}40'56" E$

CENTER COR @ MON  
 SECT 32

KIPKE DR.  
 $S 18^{\circ}27'10" W 240.24'$

E STADIUM BLVD  
 (92' R.O.W.)

UNIVERSITY OF MICHIGAN GOLF COURSE  
 #500 E. STADIUM BLVD  
 09-09-32-400-002

UNIVERSITY OF MICHIGAN SC-7 PARKING LOT  
 #500 E. STADIUM BLVD  
 09-09-32-401-001

E. STADIUM BLVD SURVEY

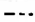



S 87^{\circ}29'59" W 1147.21'

ANN ARBOR RAILROAD  
 (59.5' R.O.W.)

MATCH LINE A-A (SEE NEXT SHEET)

E X COR @ MON  
 SECT 32

LEGEND

-  SECTION LINE
-  OLD ROW
-  PERMANENT ROW/EASEMENT
-  PROPOSED ROW (HATCHING)



**NCI** NORTHWEST CONSULTANTS, INC.

PROJECT MANAGEMENT - PUBLIC SERVICES - CITY OF ANN ARBOR

**E. STADIUM BLVD  
 BRIDGES REPLACEMENT PROJECT  
 PROPOSED ROAD ROW - EXHIBIT 5  
 500 E. STADIUM BLVD  
 09-09-32-400-002**

SCALE  
 HORIZ. 1"=100'

INCH  
 0 1/2 1

DRAWING NO.  
**2006-045-EXHIBIT 5**

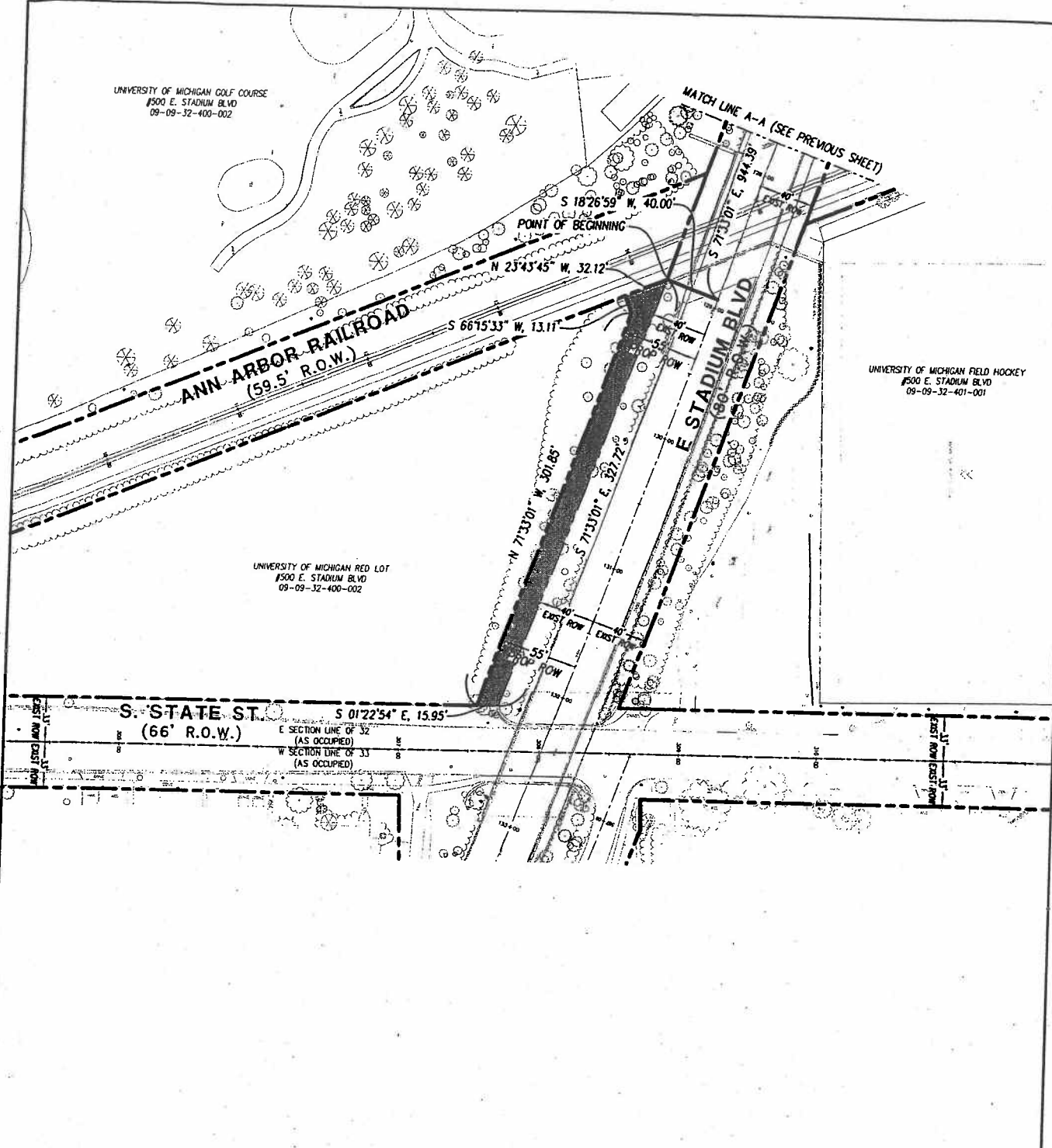
SHEET NO. 1 OF 2

REV. NO.	DESCRIPTION	DATE	DR. BY	CH. BY

UNIVERSITY OF MICHIGAN GOLF COURSE  
1500 E. STADIUM BLVD  
09-09-32-400-002

UNIVERSITY OF MICHIGAN FIELD HOCKEY  
1500 E. STADIUM BLVD  
09-09-32-401-001

UNIVERSITY OF MICHIGAN RED LOT  
1500 E. STADIUM BLVD  
09-09-32-400-002



LEGEND

	SECTION LINE
	OLD ROW
	PERMANENT ROW/EASEMENT
	PROPOSED ROW (HATCHING)

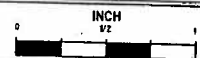


**NCI** NORTHWEST CONSULTANTS, INC.

PROJECT MANAGEMENT - PUBLIC SERVICES - CITY OF ANN ARBOR

**E. STADIUM BLVD  
BRIDGES REPLACEMENT PROJECT  
PROPOSED ROAD ROW - EXHIBIT 5  
500 E. STADIUM BLVD  
09-09-32-400-002**

SCALE  
HORIZ. 1"=100'



DRAWING NO.  
**2006-045-EXHIBIT 5**

SHEET NO. **2 OF 2**

REV. NO.	DESCRIPTION	DATE	DR. BY	CH. BY
	ORIGINAL ISSUE	07/23/10	AK	RL



UNIVERSITY OF MICHIGAN GOLF COURSE  
#500 E. STADIUM BLVD  
09-09-32-400-002

**ANN ARBOR RAILROAD**  
(59.5' R.O.W.)

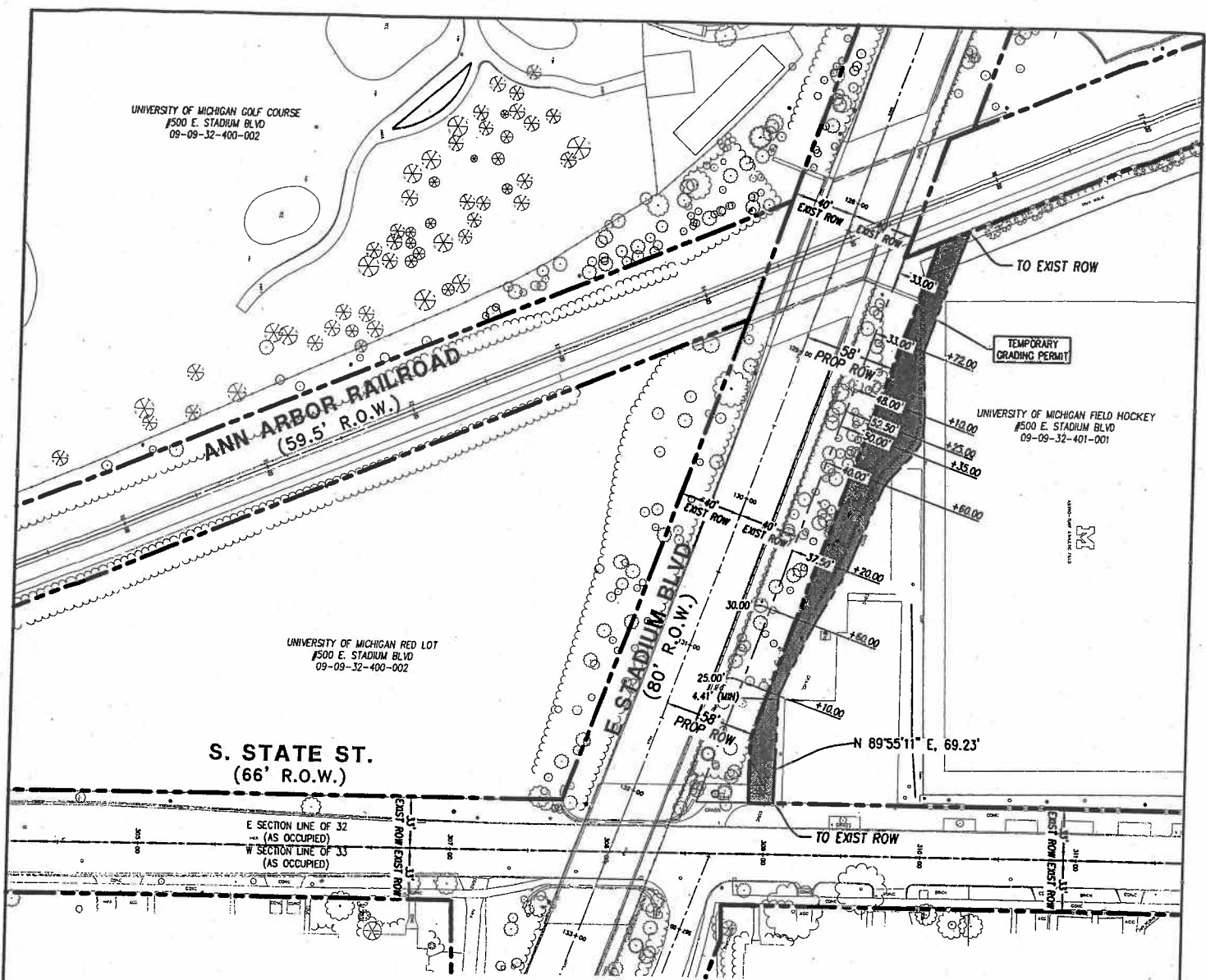
UNIVERSITY OF MICHIGAN RED LOT  
#500 E. STADIUM BLVD  
09-09-32-400-002

**S. STATE ST.**  
(66' R.O.W.)

**E. STADIUM BLVD**  
(80' R.O.W.)

TEMPORARY GRADING PERMIT

UNIVERSITY OF MICHIGAN FIELD HOCKEY  
#500 E. STADIUM BLVD  
09-09-32-401-001



**LEGEND**

	SECTION LINE
	OLD ROW
	PERMANENT/TEMP ROW
	TEMP EASEMENT (HATCHING)



**NCI** NORTHWEST CONSULTANTS, INC.

PROJECT MANAGEMENT - PUBLIC SERVICES - CITY OF ANN ARBOR

**E. STADIUM BLVD  
BRIDGES REPLACEMENT PROJECT**  
TEMPORARY GRADING PERMIT - EXHIBIT 12  
500 E. STADIUM BLVD  
09-09-32-401-001

SCALE HORIZ. 1"=100'	INCH 1/2
DRAWING NO. <b>2006-045-EXHIBIT 12</b>	
SHEET NO. <b>1</b> OF <b>1</b>	

REV. NO.	DESCRIPTION	DATE	DR. BY	CH. BY
	REVISED PER UM COMMENTS	03/07/11	AK	RL
	ORIGINAL ISSUE	08/16/10	AK	RL